



# Plant & Agricultural National Intelligence Unit

## 20th Quarterly Report - 5 Year Review Edition

nmu

Munich RE



HSB Engineering Insurance



ZURICH®

AVIVA

# 5 YEAR REVIEW



QBE

RSA



NFU Mutual

Allianz

In association with:





nmu

Munich RE

HSB Engineering Insurance

ZURICH

AVIVA

QBE

RSA

NFU Mutual

Allianz



20th Quarterly Report

Supported by  
Home Office



## PANIU 5 Year Review

**The Plant & Agricultural National Intelligence Unit was formed in October 2008. It is staffed by two detective constables a police staff researcher and a police staff liaison manager. This report intends to focus on the data captured over the previous 5 years by PANIU as part of their core function and to present this data in a meaningful and helpful manner. The core functions of PANIU are:**

- *To create and maintain a database of all recorded thefts of construction and agricultural machinery.*
- *To be a central hub, for the gathering and dissemination of intelligence, relevant to their specialist area of crime.*
- *To deliver free training/awareness to Police and Industry across the UK.*
- *To have a small, pro active investigative capability.*
- *To be the single point of contact representing Police UK in this specialist arena.*

PANIU is fully funded by the insurance industry without whose contributions none of this would be possible. Those insurance companies who support PANIU are: Allianz, Aviva, QBE, NFU Mutual, HSB Engineering, Northern Marine Underwriters, RSA & Zurich.



Additional support is gratefully received from Clancy Docwra, Datatag and Enigma Telematics.

### Data Gathering

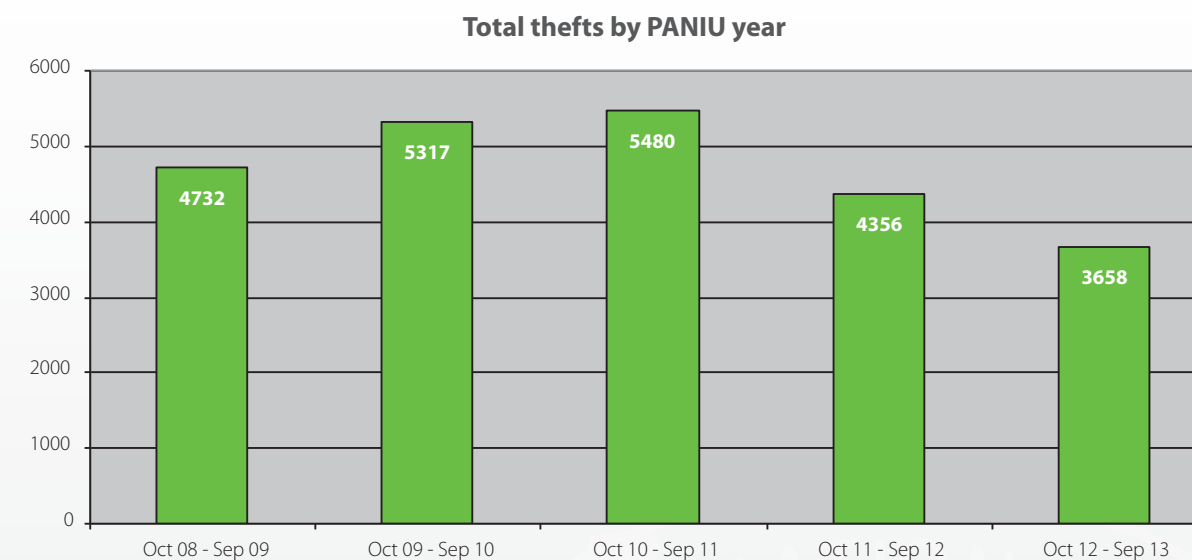
The data used to compile this report originates from a number of different sources. These are principally the Police National computer (PNC) and insurance company theft claim notifications. Additional sources of theft data may be forthcoming from Loss Adjusters who are acting for insurance companies and in some cases directly from the victim/owner who may be a large fleet owner to a single machine owner. In every case where the record originates from somewhere other than the PNC it must be supplied with a police crime reference number.

As a caveat the PANIU data is only as good as what has been correctly recorded on PNC or reported to the eight supporting insurance companies. The scale and extent of unreported thefts is simply not known and any effort to guess this figure would be entirely speculative.

As at the 30th September 2013 there were 25,998 theft records on the database. 23,543 were thefts on or after the 1st October 2008. It is this figure of 23,543 that is used for the data analysis. For the record the remainder are thefts prior to October 2008.

### Statistical Analysis

As an average the UK is losing 12.9 items of equipment per day and 392 items per month. The first graph shows the total number of recorded thefts for a twelve month period, 1st October to 30th September.



The steady increase in reported thefts to September 2011 can be attributed to many factors. These could be:

- *Better reporting by victims*
- *Better circulation on PNC by police forces*
- *Capturing more insurance claims theft data.*
- *Better awareness and understanding.*
- *Large & small fleet operators recognising the benefits of reporting the theft to police irrespective of whether they make an insurance claim or not.*

Overall, as the level of awareness has increased across all sections of the industry, so the level and accuracy of reporting has increased also.

Equipment theft is down 33.2% from the peak of October 2010 to September 2011 with 5480 thefts to 3650 thefts for the year October 2012 to September 2013





nmu

Munich RE

1818 Engineering Insurance

ZURICH

AVIVA

QBE

RSA

NFU Mutual

Allianz



## 20th Quarterly Report

Supported by  
Home Office

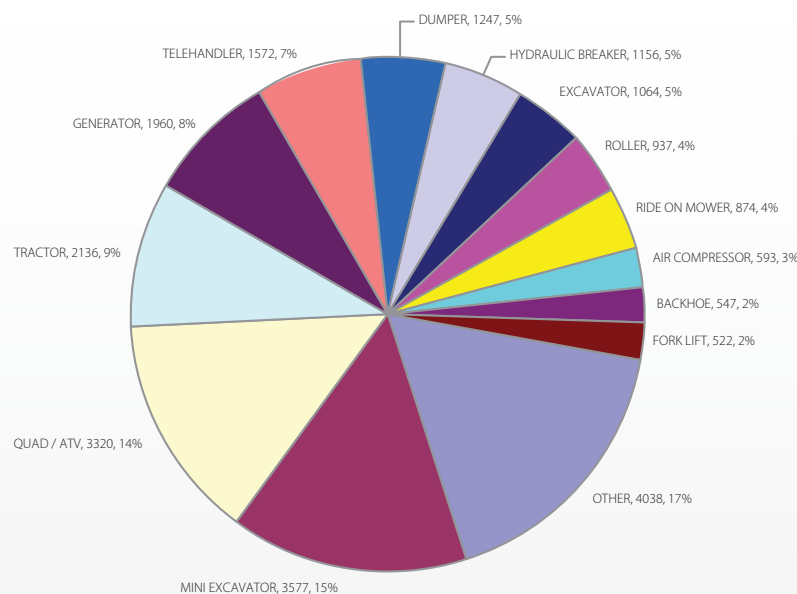


Plant & Agricultural National Intelligence Unit

### Key note - Just thirteen different types of equipment, account for 83% of all recorded thefts

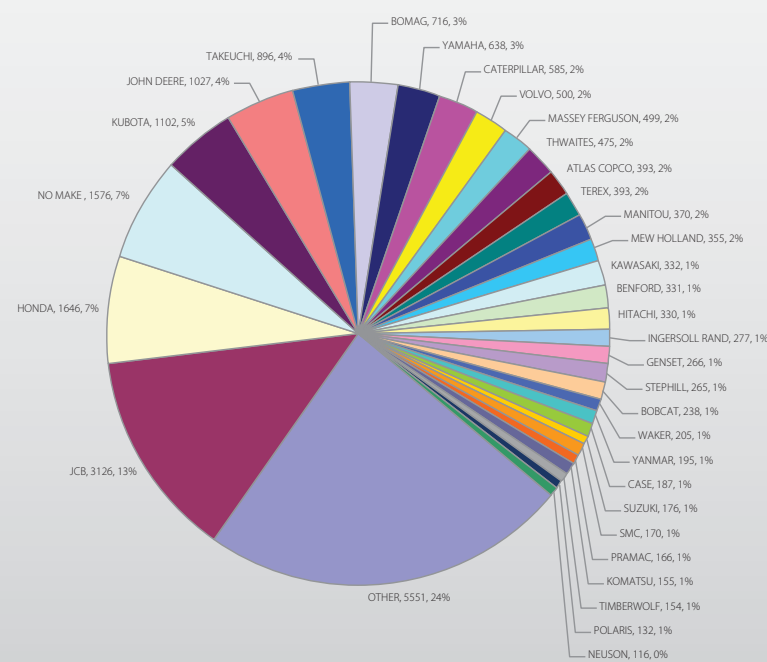
#### Theft by equipment type

PANIU continue to see numerous PNC records which miss describe items of equipment. This is hardly surprising considering all the factors involved. If it is big and yellow in colour the assumption is it must be a JCB in the same way that a vacuum cleaner is more likely to be called a "Hoover". There are so many examples to choose from to highlight the problem but one of our favourites has to be the JCB telehandler which was described as a "Digger Digger". (Make, Digger, plant type Digger).



#### Theft by equipment type

This pie chart clearly shows that in 7% (1576) of all reported cases the manufacturer is unknown. Unknown to who is the question? Very often where the make is not recorded on the theft record other important information will also be missing such as the serial number. PANIU endeavour to make the database as accurate as possible. Where additional information is required to enhance the accuracy of the record or that additional information is known to PANIU but not captured on PNC, the PNC Bureau for the relevant force area is notified, to update and amend that record.



### Key note - Three quarters (76%) of all equipment stolen is produced by just 32 manufacturers

Much has and continues to be done by the industry to reduce equipment theft across the whole of the construction and agricultural manufacturing sector. There are many stakeholders involved and all play their part in having reduced equipment theft by 33%.

We are told all reported crime is down so by definition you would expect to see reductions in equipment theft irrespective of industry initiatives. Our reductions however are worth shouting from the roof tops. Equipment theft down 33% in two years!!!

The Metropolitan Police Stolen Vehicle Unit working with Thatcham has introduced security standards for construction and agricultural machinery. The "One key fits all" syndrome is becoming a thing of the past, with many major manufacturers fitting unique keys and immobiliser technology as standard. Tracking technology in all its forms has contributed hugely to increased recoveries of stolen equipment. Not just the item of equipment fitted but very often recovered along side other stolen items.

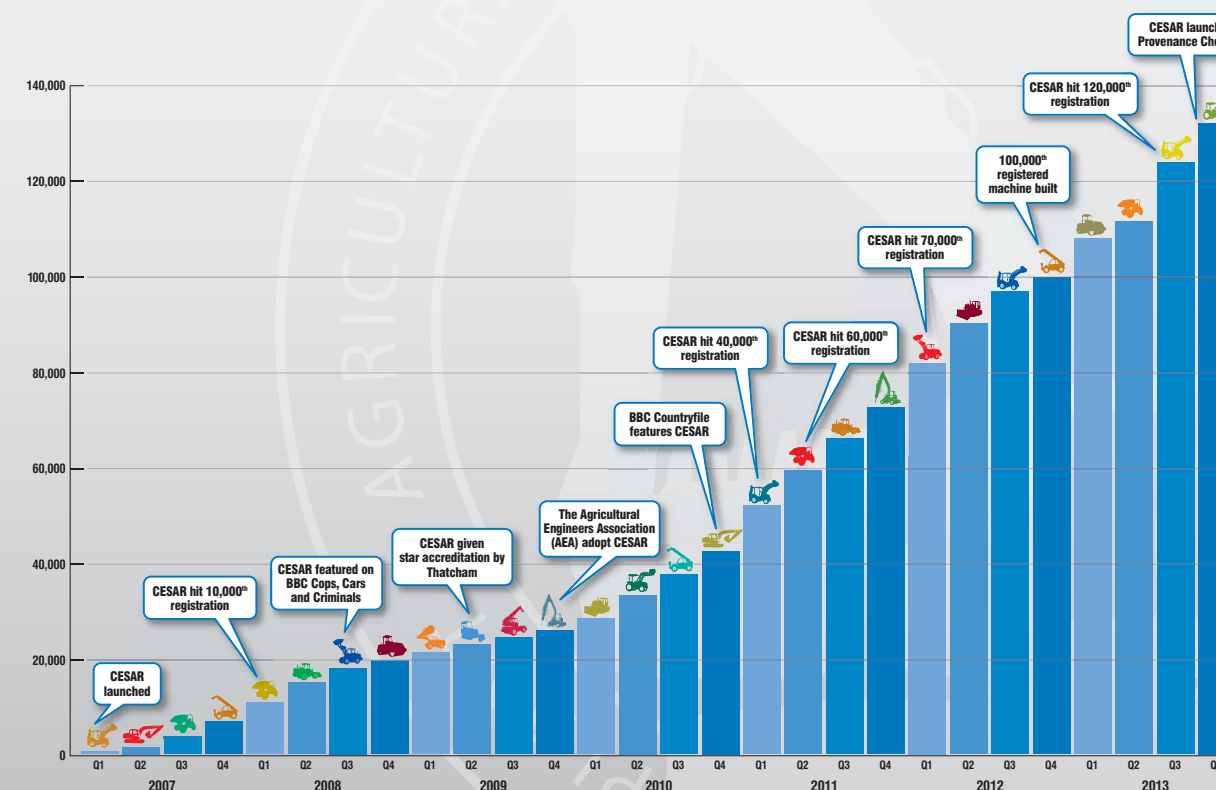
CESAR the industry marking scheme is making a huge difference in the fight against equipment theft. Let the figures do the talking:

Just about 130,000 CESAR marked items of equipment in circulation in the UK.

1,100 CESAR marked items of equipment stolen. This is less than 1%.

302 CESAR marked items of equipment recovered.

This is 27.45% (The overall recovery rate for all equipment is 8.7%).



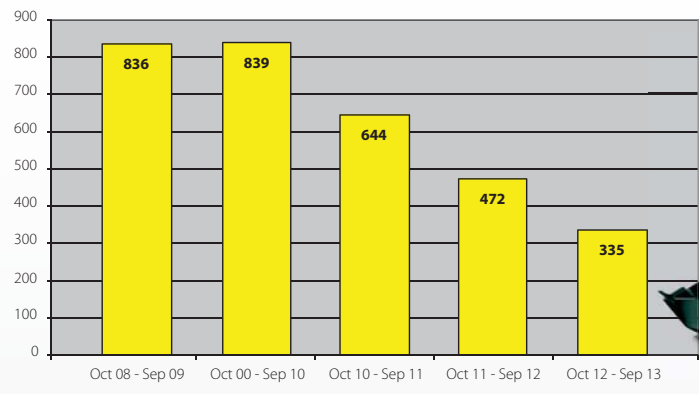


Supported by  
Home Office



The following graphs clearly demonstrate the significance and benefits of CESAR and increased security.

JCB Theft



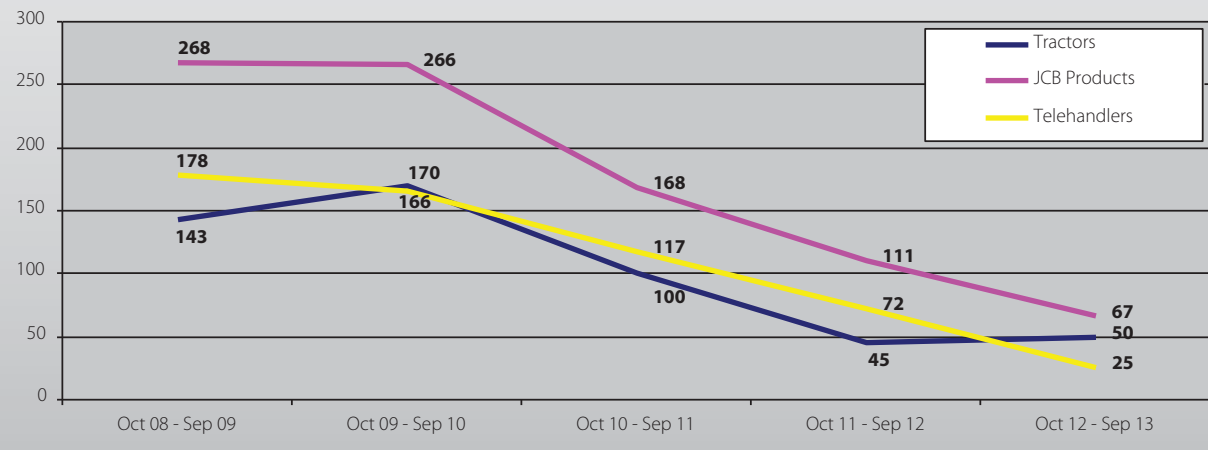
**Key note - JCB thefts have decreased 60% in 5 years.**

JCB have been fitting CESAR as standard since November 2007 on all UK products. Unique key and immobiliser technology has been phased in across most products, which attains the Thatcham 3\* standard on just about all products, where it is possible to do so. JCB “Live Link” their own telematics system is fitted to over 16,000 machines in the UK.

PANIU have recorded other staggering (and this word is not used lightly) statistics. Where the age of the machine is known at the time of theft, this has been captured. Looking at the figures for stolen tractors in the age range of 0 to 5years old, there were 268 stolen in the year October 2008 to September 2009. In our fifth year this has dropped to 67. Telehandlers from 178 to 25 and JCB product from 143 to 50.

This clearly demonstrates that newer machines are not being stolen in anything like the volume they had previously been. This has to be because they are harder to steal and easier to locate and identify in the event of theft.

**Key note - Theft of new or nearly new machines has fallen at almost twice the rate of overall equipment theft.**



The following three charts capture exactly these reductions. They show the year of manufacture in the left hand column, followed by the five PANIU years. They capture the number of thefts by year of manufacture against year of theft.

In all three of the graphs they record zero thefts for machines less than one year old in this our 5th year. This is clear evidence that thieves are targeting older machines.



TRACTOR THEFTS BY YEAR					
YOR	OCT08-SEP09	OCT09-SEP10	OCT10-SEP11	OCT11-SEP12	OCT12-SEP13
2013	0	0	0	0	0
2012	0	0	0	1	6
2011	0	0	6	7	12
2010	0	15	14	6	14
2009	12	44	25	13	18
2008	37	42	27	18	14
2007	33	42	28	15	8
2006	34	27	29	7	7
2005	27	18	25	8	12
2004	25	29	17	8	9
2003	32	25	19	3	6
2002	22	19	11	4	6
2001	22	11	3	4	8
2000	7	5	6	3	3
1990-1999	89	57	39	31	31
1980-1989	16	24	19	18	18
1970-1979	9	11	7	4	8
1900-1969	16	10	14	7	14
UNKNOWN / UNREG	178	208	156	74	120
OCT08-SEP09	82	101	45	14	18
O-3	82	101	45	14	18
O-5	143	170	100	45	50

JCB PRODUCT THEFTS BY YEAR					
YOR	OCT08-SEP09	OCT09-SEP10	OCT10-SEP11	OCT11-SEP12	OCT12-SEP13
2013	0	0	0	0	0
2012	0	0	0	2	11
2011	0	0	15	36	21
2010	0	16	36	35	18
2009	24	47	30	14	17
2008	90	73	35	24	22
2007	85	88	52	27	29
2006	44	42	32	24	17
2005	25	30	25	16	7
2004	35	34	15	8	5
2003	26	26	10	9	7
2002	25	21	7	8	2
2001	16	14	6	6	4
2000	12	8	12	1	4
1990-1999	52	26	19	20	10
1980-1989	4	2	3	3	0
1970-1979	0	0	0	0	0
1900-1969	0	0	0	0	0
UNKNOWN	398	412	347	240	106
OCT08-SEP09	199	136	81	73	32
O-3	199	136	81	73	32
O-5	268	266	168	111	67

TELEHANDLER THEFTS BY YEAR					
YOR	OCT08-SEP09	OCT09-SEP10	OCT10-SEP11	OCT11-SEP12	OCT12-SEP13
2013	0	0	0	0	0
2012	0	0	0	4	4
2011	0	0	10	17	3
2010	0	4	24	17	13
2009	6	16	15	10	5
2008	54	50	23	24	17
2007	64	72	45	25	27
2006	31	24	26	13	14
2005	23	32	23	20	9
2004	26	33	12	9	7
2003	14	22	8	6	6
2002	17	11	5	7	3
2001	8	13	5	5	0
2000	6	9	7	0	4
1990-1999	14	15	16	18	9
1980-1989	1	4	0	0	0
1970-1979	0	0	0	0	0
1900-1969	0	0	0	0	0
UNKNOWN	113	129	113	81	56
OCT08-SEP09	124	70	49	38	7
O-3	124	70	49	38	7
O-5	178	166	117	72	25

Conclusion

For the first time, PANIU have been able to produce a true reflection of the scale and extent of plant and agricultural theft in the UK. The data used is the best available anywhere in the UK.

The analysis completed and presented in this report, clearly and unequivocally demonstrates that equipment theft is falling. Whether it continues to fall remains to be seen. However there is no room for complacency we must collectively continue to work to reduce thefts still further.

**Barry Mudie** - Liaison Manager Plant & Agricultural National Intelligence Unit







nmu

Munich RE

1800 Engineering Insurance

ZURICH

AVIVA

QBE

RSA

NFU Mutual

Allianz



20th Quarterly Report

Supported by  
Home Office



Construction Plant Users Association



Agricultural Engineers Association



stronger together

## Facts & Figures Jul-Sept 2013

JUL-SEPT 2013		
RANK	MANUFACTURER	TOT
1	JCB	87
2	JOHN DEERE	54
3	KUBOTA	34
4	BOMAG	33
5	BENFORD/ TEREX	18
6	TAKEUCHI	16
7	THWAITES	15
8	STEPHILL	15
9	VOLVO	15
10	HITACHI	14
	OTHERS	278
	<b>TOTAL</b>	<b>579</b>

JUL-SEPT 2013		
RANK	POLICE FORCE	TOT
1	WEST YORKSHIRE	53
2	WEST MERCIA	29
3	ESSEX	28
4	METROPOLITAN POLICE	26
5	CAMBRIDGESHIRE	26
6	KENT	24
7	GREATER MANCHESTER	23
8	SOUTH YORKSHIRE	22
9	THAMES VALLEY	22
10	SURREY	22
	OTHERS	304
	<b>TOTAL</b>	<b>579</b>

JUL-SEPT 2013		
RANK	PLANT TYPE	TOT
1	MINI EXCAVATORS	96
2	TRACTORS	81
3	GENERATORS	57
4	RIDE ON MOWERS	50
5	TELEHANDLERS	49
6	ROLLERS	41
7	DUMPERS	34
8	ATTACHMENTS	27
9	UTILITY TRUCKS	23
10	EXCAVATOR	17
	OTHERS	104
	<b>TOTAL</b>	<b>579</b>

JUL-SEPT 2013		
RANK	REGIONAL CLUSTER	TOT
1	YORKSHIRE & NE	159
2	SOUTH EAST	146
3	EAST MIDS & ANGLIA	68
4	MIDLANDS	58
5	NORTH WEST	52
6	SOUTH WEST	38
7	SCOTLAND & NI	36
8	WALES	12
9	BTP & MOD	6
	UNKNOWN/ OTHER	4
	<b>TOTAL</b>	<b>579</b>

JUL-SEPT 2013		
RANK	QUAD MAKES	TOT
1	HONDA	76
2	YAMAHA	36
3	SUZUKI	20
	OTHERS	70
	<b>TOTAL</b>	<b>202</b>



## CATERPILLAR®

### Training Day

**Our thanks to Caterpillar for hosting two brilliant days of training for UK law enforcement.**

Our recent training event at Caterpillar Desford, Leicester was a great success, with 100 officers or police staff in attendance over the two days.

Holly Sutton, Head of Caterpillar Global Security flew into the UK from Illinois USA especially to deliver these two training days, to UK law enforcement.

The day included presentations from Holly on machinery identification and the global theft issue for Caterpillar. PANIU gave the UK overview of plant theft. Chris Harrison from Datatag updated the audience on CESAR and Ed Coombs gave a presentation on technical developments and security features of Caterpillar. There then followed a factory tour. The day was rounded off with a very professional display of Caterpillar machinery in operation.



Here a member of Caterpillar staff is showing officers some of the identification details of their 432F Backhoe Loader.



Holly is pictured, standing in the bucket of a 924 Shovel Loader with PANIU Liaison Manager Barry Mudie.





nmu

Munich RE

1800 Engineering Insurance

ZURICH

AVIVA

QBE

RSA

NFU Mutual

Allianz



20th Quarterly Report

Supported by  
Home Office



## Recovery

### Scania P Series

C Class 8x4 axle

Fitted with Armcon Volumetric mixer

**DX62CYU**

VIN: XLEP8X40005294988

Stolen: 14-15th May 2013

From: Bradfield Road Lonodon E16

Value: £250,000

Crime Reference number: 5312316/13



## Recovered by PANIU

### The Armcon Volumetric Mixer

Location: *Gravesend Kent*

No trace of the Scania chassis cab so  
the LOS marker remains on PNC.



## Unusual & Outstanding Thefts

### 2012 TEREX FUCHS HML340 Excavator

Serial Number: 3402102273

Stolen: 21st May 2013

Location: *Cleveland Hill Tuxford Notts*

Along with two attachments, Selector

Grab & Arden 1300 Scrap Shears.

Notts crime ref: no BR/039964/13

(Picture is of the actual machine)



## GMP Recover Stolen VOLVO EC15 with help of PANIU

During the search of a premises in GMP the Volvo mini excavator was found inside this horsebox.

Initial checks on PNC were negative.

PANIU were contacted and checked their database. A possible match was found with a recorded serial number of 13823X7050. This was then checked on PNC and the stolen marker found.

At the time of reporting the theft the last five digits of the serial number were given to police along with the fleet number "X7050". This was circulated on PNC as the serial number.

Had the PANIU database not been checked this machine may not have been recovered



```
INPUT DATA :13823X7050:1:F:    ** EXACT MATCH **
PROPID      : 13/502473A
MANUFACT NO: 13823X7050
FLEET NO    :
ENGINE NO   :
CESAR NO    :
ITEM TYPE   : PLANT
PLANT TYPE  : DIGGER
ITEM MAKE   : VOLVO
ITEM MODEL  : 1.5 TONNE
ITEM COLOUR: YELLOW
ENGINE CAP  :

CREATED: 02/07/13 AT 14:49
OWNER: 13EA

** REPORT 1 OF 1 **
LOST/STOLEN   CONFIRMED   OWNER: 13EA   REF: 13130271882
INC.DATE: 01/07/13      CREATED: 02/07/13 AT 14:49
```



The serial number plate and stamped number were correct



The fleet number "X7050" hand written inside the cab.





nmu

Munich RE

1800 Engineering Insurance

ZURICH

AVIVA

QBE

RSA

NEU Mutual

Allianz



20th Quarterly Report

Supported by  
Home Office



Plant & Agricultural National Intelligence Unit

## NEW SERVICE PROVIDES EQUIPMENT PROVENANCE CHECK AT THE CLICK OF A MOUSE

Automotive-style equipment provenance checks are available from today thanks to a new on-line service launched by Datatag in conjunction with HPI, the pioneer and leader in vehicle history checks. The new CESAR branded provenance check provides a new level of assurance whenever a used construction or agricultural machine is bought or sold.

The new service was launched to the press, the insurance and asset finance industry and prospective business users at JCB's world headquarters at Rocester, Staffordshire this morning. The CESAR provenance check has been developed by Datatag and HPI at the behest of the insurance and asset finance industry which has enjoyed the benefits of accurate history checks for cars and vans for many years, but which had lacked a reliable provenance checking service for construction and agricultural equipment, until today. JCB Finance has, through its work on the FLA's Asset Registration Group and directly with Datatag, been one of the most active and vocal finance companies calling for such a service.

Rob Oliver, Chief Executive of the Construction Equipment Association commented at the launch, "CESAR has had a huge impact since its launch as it has reduced equipment theft and increased the recovery rate of stolen machines. I am quite sure that CESAR provenance checks will help reduce the anguish and costs inflicted on legitimate businesses by buying or selling a stolen, cloned or fraudulent machine."

Many stakeholders in the manufacture, supply, financing, and operation of equipment have suffered financial loss by buying or selling a machine with a 'chequered history'. Amongst frequent problems reported to the police are stolen machines, cloned machines, machines bought or sold when subject to one or more finance agreements, machines which are subject to an insurance claim and machines which do not meet EU type approval, so called 'grey imports'.



To read the full articles go to: <http://www.cesarscheme.org/News.html>

## RURAL CRIMEBEAT

Are the police doing enough to tackle rural crime? Natalie Wallace reports on the innovative approach of Thames Valley Police.

Thames Valley Police is taking rural crime very seriously, and to show its commitment to tackling the problem, it has launched a '100 days of action' initiative.

The policing project, which kicked off in the summer, highlights the work the force is doing to tackle the crimes of most concern to the farming community.

Each of the 10 rural Local Policing Areas is holding 10 days of operational and crime prevention activities, five in the summer and five in the winter.

The main priorities are theft from, and of, agricultural machinery, break-ins at farm buildings and wildlife crime, such as hare coursing.



## CESAR JOINS INTERPOL TO TACKLE VEHICLE CRIME

Experts from law enforcement and the private sector, including Britain's Datatag, gathered at INTERPOL's headquarters to discuss ways to effectively combat the growing problem of vehicle crime. The three-day INTERPOL Global Conference on Vehicle Crime brought together nearly 200 participants from 55 countries, 40 private entities and six international organizations to share expertise and best practices on preventing vehicle theft, recovering stolen vehicles and ensuring stolen vehicles are not used in other crimes.

Datatag Sales Director Chris Harrison addressed the meeting highlighting the success, over 7 years, of the official equipment security scheme CESAR. Launched in 2007 CESAR now protects over 130,000 pieces of equipment. Mr Harrison explained the 'CESAR effect' stating that CESAR has reduced overall equipment theft in the UK, increased the rate of recovery of stolen equipment by a factor of 6, and help reduce insurance premiums on equipment.



To read the full articles go to: <http://www.cesarscheme.org/News.html>





Supported by  
Home Office



Plant & Agricultural National Intelligence Unit

# The Official Construction and Agricultural Equipment Security and Registration Scheme

# HALL OF FAME

### Leading OEM's manufacturers support

<b>DOOSAN</b> Installation by : Import Centre Models Fitted : All Fitted Since : September 2007	<b>JCB</b> Installation by : Factory Models Fitted : All Construction except Horticultural & Agri Fitted Since : November 2007	<b>NC ENGINEERING</b> Installation by : Factory Models Fitted : All Dumpers Fitted Since : February 2008	<b>MANITOU</b> Installation by : Import Centre Models Fitted : All Fitted Since : April 2008
<b>MERLO</b> Installation by : Import Centre Models Fitted : All Fitted Since : June 2008	<b>HANIX</b> Installation by : Import Centre Models Fitted : All Fitted Since : July 2008	<b>TAKEUCHI</b> Installation by : Import Centre Models Fitted : All Fitted Since : September 2008	<b>BELL</b> Installation by : Import Centre Models Fitted : All Articulated Machines Fitted Since : January 2009
<b>Landini</b> Installation by : Import Centre Models Fitted : All Fitted Since : January 2010	<b>MCCORMICK</b> Installation by : Import Centre Models Fitted : All Fitted Since : January 2010	<b>FINNING CAT</b> Installation by : FINNING Models Fitted : All Fitted Since : March 2010	<b>JCB</b> Installation by : Factory Models Fitted : All Agricultural except Horticultural Fitted Since : March 2010
<b>JOHN DEERE</b> Installation by : Factory Models Fitted : A5, 6, 7, and 8 Series Tractors Fitted Since : April 2010	<b>Kubota</b> Installation by : Import Centre Models Fitted : U17 and KX080-3 only Fitted Since : September 2010	<b>VALTRA</b> Installation by : Factory Models Fitted : All Fitted Since : January 2011	<b>GEHL</b> Installation by : Import Centre Models Fitted : All Fitted Since : January 2011
<b>Zetor</b> Installation by : Import Centre Models Fitted : All Fitted Since : January 2012	<b>SAM</b> Installation by : Factory Models Fitted : All Fitted Since : June 2012	<b>NEW HOLLAND AGRICULTURE</b> Installation by : Factory Models Fitted : All T6 & T7 Tractors Fitted Since : August 2012	<b>CASE IH</b> Installation by : Factory Models Fitted : All Fitted Since : September 2012
<b>MASSEY FERGUSON</b> Installation by : Factory Models Fitted : All Fitted Since : January 2013	<b>INDECO</b> Installation by : Import Centre Models Fitted : All Fitted Since : January 2013	<b>CHALLENGER</b> Installation by : Factory Models Fitted : All Fitted Since : May 2013	<b>AMAZONE</b> Installation by : Factory Models Fitted : Pantera & Groundcare Fitted Since : June 2013

### OEM's providing CESAR as an option

<b>Bobcat</b>	<b>BOMAG</b>	<b>DOOSAN</b> Doosan Infracore Portable Power	<b>KOMATSU</b>
<b>TEREX</b>	<b>TIMBERWOLF</b>	<b>VOLVO</b>	

Promoted by **CEA** [www.coneq.org.uk](http://www.coneq.org.uk)

Promoted by **AEA** [www.aea.uk.com](http://www.aea.uk.com)

For further information contact us on: 08 450 700 440  
[www.cesarscheme.org](http://www.cesarscheme.org) | [enquiries@cesarscheme.org](mailto:enquiries@cesarscheme.org)

powered by **datatag** [www.datatag.co.uk](http://www.datatag.co.uk)

# STOP PLANT THEFT

If you have any information on the theft of machinery or require advice, then contact: Plant & Agricultural National Intelligence Unit

PANIU Officers Checking Equipment

Scanning of Registered Machinery

### Did you know...

- The Plant and Agricultural National Intelligence Unit is a specialist Police Unit whose remit is to assist Police and other law enforcement agencies with the identification of stolen plant or agricultural machinery.
- We offer support and advice to help you identify any type of plant or agricultural machine.
- We maintain the most accurate police database of all stolen machines throughout the UK.
- We record all national theft data and have access to the PNC and the majority of plant insurers and manufacturers loss data.
- We offer advice, intelligence and statistical information regarding organised criminal networks working in your area.
- We can provide suitable 'sting' vehicles including tractors and excavators at nil cost.
- We provide specialist police examiners for pre planned operations.
- We provide training and advice to officers around identification and investigative techniques.

### The Official Security & Registration Scheme

[www.cesarscheme.org](http://www.cesarscheme.org)

PANIU promote the CESAR registration scheme whereby registered plant equipment can be identified by any person without the need for detailed examinations or specialist equipment. CESAR was created as a direct result of police highlighting the difficulties they faced when dealing with equipment theft.

You can contact PANIU during office hours by ringing 0207 230 7290

Out of these hours the PANIU stolen equipment database can be accessed by Police by ringing CESAR on 08 450 700 440 24 hours a day!

**PANIU is staffed by Police Officers there to help You!**

In Association With:

[www.datatag.co.uk](http://www.datatag.co.uk)

[www.cits-uk.org](http://www.cits-uk.org)





# Plant Theft - The Real Truth

**PANIU is a specialist police unit dedicated to reducing plant theft  
in association with:**

Supported by  
**Home Office**



Association of  
Chief Police Officers



**Thatcham**<sup>™</sup>  
Quality Assured  
Whole of Vehicle Marking



Construction Plant  
hires Association



Agricultural Engineers Association



Plant Theft Action Group



**It would not have been possible without the assistance  
and funding help specifically from:**



HSB Engineering Insurance



*All images, information, statistics and data is the property and the copyright of the Plant & Agricultural National Intelligence Unit (PANIU) and must not be reprinted, reproduced or used without the written permission of PANIU.*

In association with:

