



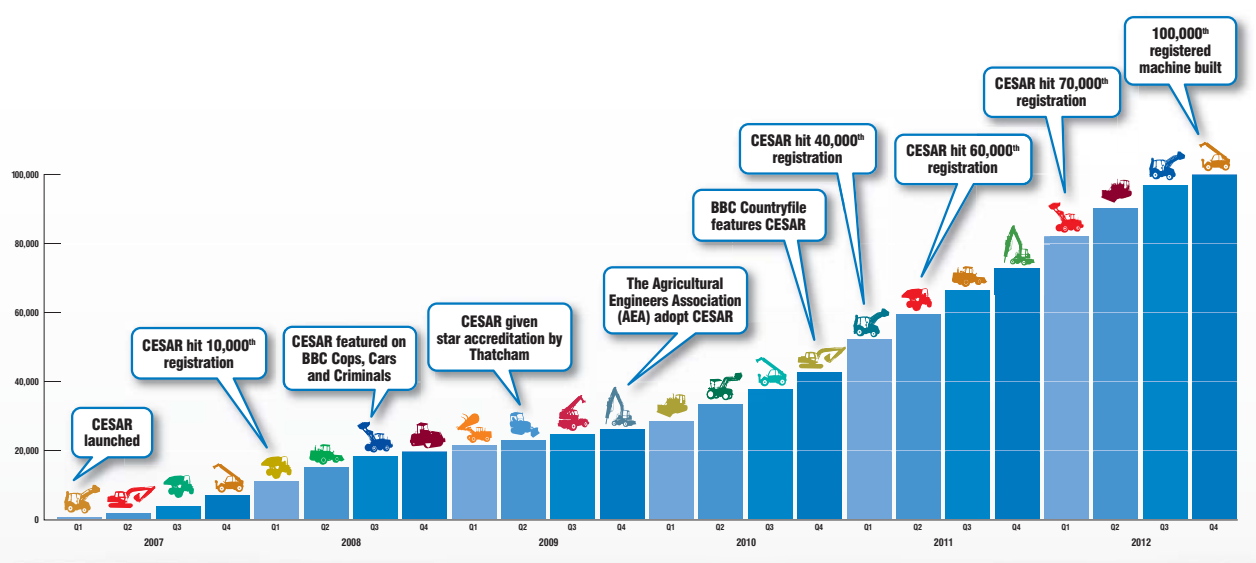
Plant & Agricultural National Intelligence Unit

15th Quarterly Report (April - July 2012)



In association with:





JCB build 100,000th CESAR registered machine



JCB has today built the 100,000th machine to be fitted with CESAR security and registration.



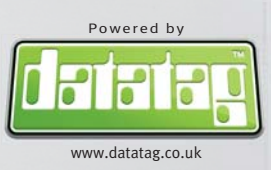
The JCB 541-70 Loadall rolled off the production line at 10 a.m. fitted with an appropriate CESAR triangular tamper evident registration plate with the distinctive alpha-numeric registration mark 100000 (one, zero, o, o, zero, o).

JCB was one of the early adopters of the scheme, fitting CESAR to its UK construction machines from February 2008 and to agricultural machines from January 2010. JCB machines are common targets for professional and opportunistic criminals that prey on unwary owners and operators. Notably with the fitment of CESAR, and other anti-theft measures, the theft rate of JCB machines, has dropped markedly. In the second quarter of 2012 just 89 JCB machines were reported as being stolen compared to 188 machines in the same period of 2009, a reduction of 52%.

CESAR works by giving each piece of equipment a unique 'fingerprint' using an array of high technology security marking devices, supplied by Datatag, including tamper evident triangular registrations plates, Radio-frequency identification (RFID) transponders, forensic liquid DNA, and microscopic Datadots®.

Rob Oliver, Chief Executive of The Construction Equipment Association and the man behind the development of the scheme, witnessing the 100,000th CESAR registered machine rolling off the production line commented, "CESAR has achieved what it was designed to do. Without question CESAR has reduced the rate of equipment theft and it gives the construction and agricultural industries, the police and other security agencies the upper hand in fighting organised and opportunistic criminals that target all types, all sizes and all brands of equipment. I would like to thank all the manufacturers that have adopted the scheme, the many public bodies and the police that support and promote CESAR and last but not least the AEA who enabled the power of CESAR to be unleashed in the agricultural market. 100,000 registrations in six years is a significant achievement but we've still some way to go to eradicate equipment theft. Hopefully the few remaining manufacturers of construction and agricultural machines that have chosen not to adopt CESAR so far may now do so."

The JCB Loadall, with its distinctive registration plate, will be making an appearance at the ACPO rural crime conference due to be held in Kettering on November 8th.



Welcome to the 15th edition of the Plant and Agricultural National Intelligence Unit (PANIU) crime report.

This edition celebrates a number of important news items which highlight that police activity against the organised criminal networks continues to grow year on year since the establishment of PANIU in October 2008.

The purpose of the report is to highlight the current issues relating to plant theft, the emerging criminal trends, and the work of Police Partnerships throughout the UK in combatting machinery and equipment theft. Together with the farming and construction industries plant theft can be beaten!!

This report documents the latest crime data available relating to thefts of plant and agricultural machinery throughout the UK and as such uses data obtained during the period 1st April 2012 to July 31st 2012 and the national trends reported to the Plant and Agricultural National Intelligence Unit (PANIU) during the same period.

PANIU is a specialist police unit that is totally funded by the major Construction and Agricultural Insurance industries and from funding directly from sales of the Construction and Agricultural Equipment Security and Registration Scheme (CESAR).

The primary aim of the unit is to reduce plant and agricultural theft across the United Kingdom. It does this in two ways, firstly by assisting the Roads Policing Officer and Patrol officer on the street enabling them to identify stolen equipment and tackle the organised criminal networks responsible for targeting thefts of such plant equipment.

Secondly, by providing the industry with direct access to a team of specialist Police officers who are committed to reducing plant theft and who understand the complexities of the respective industries. PANIU assist Police throughout the Country by providing advice and intelligence relating to theft of plant machinery. They maintain the most accurate theft database known and receive daily data not only from the PNC but also from the majority of the major insurers in the current market. All data is carefully checked for accuracy and cleansed. The PANIU database is the only one in the world that is considered so accurate that it is circulated by both SOCA and Interpol and is approved by the Home Office, ACPO and the National Police Improvement Agency (NPIA).

PANIU data is held for detection and prevention of crime purposes only and does not operate on a commercial reward basis.

The current PANIU stolen equipment database commenced in October 2008 and now comprises over 21,350 items of equipment. This data is circulated to 187 countries worldwide using the Interpol ASF network.

In a joint partnership with the Insurance companies and the official Home Office backed Construction and Agricultural Equipment Security and Registration Scheme, (www.cesarscheme.org) all PANIU data can be accessed out of normal office hours on 08450 700440.

This allows a police officer to check any suspicious equipment 24 hours a day through Datatag, the official data partner.





2012

Lord Henley, Minister of State for Crime Prevention, extols use of CESAR in fight against Crime!

On Thursday 24th May 2012 the Combined Industry Theft Solutions Conference was held at Stoneleigh Agricultural Showground in Warwickshire.

Titled 'Security Threats 2012' in line with the forthcoming Olympic Games the conference concentrated on issues that were effecting the plant and farming industries and the consequence that the Games may have played to current threats and risks.

Lord Henley, the Home Office Minister of State for Crime Prevention, himself a farmer and landowner spoke of the outstanding contributions that CESAR had made to help reduce plant and machinery theft and highlighted the work of the CITS team.

DC Ian Elliott from PANIU attended and was invited to present to the audience. His presentation was designed to be controversial and highlighted some working practices within the industry that he felt held the industry back and were sometimes conducive in allowing theft and fraud to flourish. The Combined Industry Theft Solutions is a forum made up of industry partners concerned about issues that affect the farming and construction world. Their primary aim is to promote best practice within the industry and reduce theft.

Further details regarding CITS can be found at <http://www.theftsolutions.org/news.html>



ARE you aware that you can check all PANIU data 24/7 via the CESAR database on 08 450 700 440

Internet Scammers target Plant Trade Publications

Warning to the Plant / Farm Machinery Industry:

With the recent news relating to the formation of many community and Police partnerships around the country and the significant impact they are having in reducing crime in those areas it appears the criminals are moving to other methods to earn their ill gotten gains.

Whilst this reduction is good for the industry it appears that we must remain alert to the new trends.

Recently more and more reports are being made to PANIU by both farmers and plant managers where they have become victims of sophisticated frauds.

Criminals using sales media are defrauding innocent intended purchasers by offering for sale machinery and equipment which simply doesn't exist.

Adverts are appearing on the internet and in trade press and publications appear to be from legitimate traders selling all types of equipment but are actually cloned and fake.

The scam involves electronically copying or 'lifting' genuine sale listings from reputable dealers who are advertising machines in the trade press and then copying them across to fake adverts offering the same equipment via adverts in other publications. The advert will often pretend to be from genuine well known companies and thus buyers are lured into dealing with them not aware that they are actually dealing with scammers.

The fraud becomes complete when any sale is agreed and the intended purchaser either transfers or 'wires' funds into the scammers bank accounts when either a deposit is asked for or full payment is made on the promise that the equipment will be subsequently delivered.

PANIU has been contacted on regular occasions by farmers who thought they were buying from legitimate companies/dealers only to find that they have been scammed and lost every penny.

PANIU remind potential purchasers never to purchase equipment sight unseen or transfer funds to other accounts without viewing the equipment and meet the seller at their premises thus confirming the equipment actually exists and the sale is genuine.

You have been warned!!



Plant & Agricultural National Intelligence Unit



Plant & Agricultural National Intelligence Unit

Tractors being cloned and sold on!

Further to the recent story (Internet Scammers), PANIU are also warning potential purchasers of plant and farm machinery to do their homework on machines offered for sale!

In the last month alone PANIU have been made aware of a number of machines recovered from innocent purchasers whereby the whole identity of the machine had been changed.

Criminal networks are starting to 'up their game' in response to increased police awareness relating to plant machinery and thus have been professionally disguising machines by cloning their identities.

Criminals will steal a machine and then remove the original true identity plant identification number or PIN (VIN) and restamp the machine with a number from another machine. Usually that PIN number relates another genuine machine which is often overseas.

Therefore any checks made by purchasers using online Vehicle Checking companies will result in clean records with no stolen markers. This is due to the fact that you are checking on a genuine vehicle details which have been cloned across to the stolen machine.

Close examination of the machine in question and then follow on enquiries with the manufacturer will often reveal a fraud.

Very few second hand machines ever get imported into the UK so please be suspicious if offered a machine which is a few years old and states its from the US or Europe!!!

Excellent work by DC Simon Griggs of Kent Police recently recovered a John Deere 7430 tractor in July of this year at Dover Ferry Terminal.

Upon examination the tractor was bearing the VIN/PIN RW7430K007419. When checks were made on this vehicle with John Deere the real machine was sold for the US market.

Further examination revealed that indeed the VIN/PIN stampings and the plates were actually false and had been restamped very professionally.

The tractor was identified as a stolen tractor FX07FUE, stolen from Cambridgeshire in July 2012.



Stolen John Deere 7430 stopped at Dover Docks on board a Polish registered curtainsider lorry in July 2012.



Mud covering the VIN helped to disguise this fake number.



However closer examination of the number revealed that it had actually been restamped with a cloned identification and was really FX07FUE, stolen from Cambridgeshire in July 2012.

Owners persistence pays off!!

Police across the country face great difficulties in identifying stolen and rung plant especially when the thieves have gone to the extent of falsifying VIN numbers and VIN plates. Without fitment of CESAR registration systems it is incredibly hard to determine the true identity of machines.

However, the persistence of an owner that a machine was actually the same as his that was stolen helped in this case. Peter Mannington had his rare Massey Ferguson 4335 stolen from his farm in East Sussex in November 2011. It was a 2003 model that had a number of rare special options fitted. It also happened to be the last customer MF4335 produced at the Banner Lane Factory in Coventry before production ceased. As such Mr Mannington was particularly proud of his vehicle and was rightfully very upset when it was stolen.

He duly placed adverts within the trade press for information as to the whereabouts of said machine. Anonymous information was received which lead Mr Mannington to contact police in nearby Kent where this machine was rumoured to be. Unfortunately, the identification of the vehicle had been changed very professionally and police were unable to identify the tractor as one and the same.

Undeterred Mr Mannington was adamant that the vehicle was his and contacted AGCO the manufacturers and obtained a further build sheet of his vehicle showing the rare options and specification of his machine. He then contacted DC Chris Ruff from AVCIS who is attached to NFU Mutual Investigations, his insurers, and told him of the scenario.

The vehicle was further examined by police and finally identified as the stolen machine. Mr Mannington and his MF 4335 are now reunited!!



Fire Brigades targetted by thieves for life saving equipment.

Callous thieves have been targetting emergency fire tenders across the South East for specialist life saving tools that they carry. Two recent thefts have occurred in Beckenham in South London and Leyton in East London where the thieves targetted specialist Holmatro cutting shears also known as the 'jaws of life' for their phenomenal ability to slice through metal. The tools are used specifically to cut away damaged vehicles in order to release trapped occupants, but it is believed that the shears are being stolen by metal thieves who use the tools to cut power cables and padlocks to enable further thefts.



Holmatro 'jaws of life' cutting shears

The thieves are also targetting thermal imaging cameras used by the Fire Brigade to identify hot spots in buildings and trapped victims.

PANIU ask that anyone found in possession of the items shown below to call them to verify the authenticity and authority to have possession of such items.



Fire Brigade Thermal imaging cameras



Lancashire Police lead fight in Plant Crime

Following on from the very successful Rural crime conference in March of this year Lancashire Police are determined to tackle plant theft in their area.

Recent arrests have been made which resulted in the recovery of stolen equipment and intelligence gained.

Lancashire Constabulary Stolen Vehicle Squad now want to raise the profile of Plant and Agricultural theft in their area and in a bid to stop the movement of stolen equipment across their county the force has equipped all 23 motorway patrol cars, 5 motorcycles and other specialist vehicles with Plant Machinery examination kits.

DS Ingham of the Serious and Organised Crime Unit at Lancashire Police HQ said 'We have now given these patrol officers the training and tools to spot and examine suspicious plant and agricultural equipment and will continue to support police across the County with help and assistance.



DCI Tim Leeson from Lancashire Constabulary Serious and Organised Crime Unit handing the kits to Inspector Bower, head of the Motorway Roads Policing unit.

Lancashire are the first force in the UK to train and equip its officers in this way.

The kits included tools and equipment needed by police to be able to examine machinery on the roadside. Funding for these kits was provided by the official CESAR marking scheme.

Local Countrywatch scheme pays dividends!!

A number of persons are assisting police with their enquiries after the Essex Countrywatch scheme proved its success. Police and other Countrywatch members were alerted to suspicious characters visiting farmyards in the Willingale area last month by a concerned farmer.

A blue Mercedes Sprinter van was seen driving into local farms. When challenged the occupants just stated they were looking for scrap metal. However, the van and occupants were circulated throughout the area to Countrywatch members as the farmer was concerned that their intentions may not have been honourable.

A short while later Police found the Mercedes van and a white Transit van in the Fern Hill travellers site in Harlow and it was found to be containing a stolen quad bike. The van itself was also found to be bearing false plates and itself actually reported stolen.

Well done to Tony Ellis from Essex Police and all his team in helping to ensure these type of initiatives keep working...

Current Crime Trends - Good news

PANIU have the pleasure in reporting another consistent and significant drop in overall plant theft for the period April – June 2012.

Following on from the 17% reduction over the last quarters when compared to 2010 figures these last three quarters have subsequently seen a further 12% reduction in overall theft figures.

For the latest quarter April – June 2012 704 recordable items were stolen compared to 716 in Jan – March 2012 and 807 for the period Oct – Dec 2011.

When compared to the same period April – June 2011 when 913 crimes were reported this shows a 22% reduction overall between 2012 and 2011.

Plant Types.. Good news and bad news..

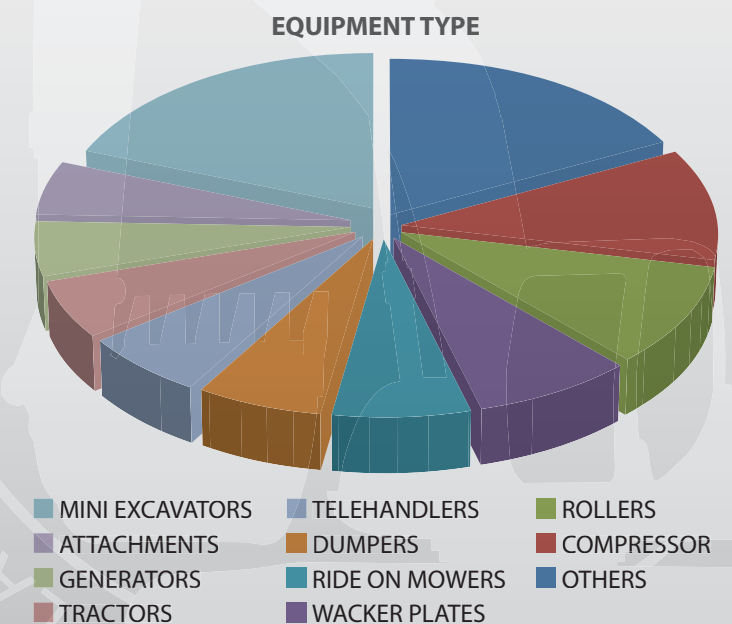
This quarter as per the last has seen the continued item of choice for the plant thief to be smaller items of construction machinery. This, in the main, appears to highlight that these attacks are less targeted, more sporadic and instantaneous taking what appears to be laying around the site rather than concerted attacks.

There has, however, still been a continued demand for mini excavators with 125 stolen against 130 stolen during the previous quarter but noticeably there has been a 94% increase in the demand for small rollers with 37 stolen this quarter compared to Jan – March 2012 when only 19 were stolen.

Wacker Plates are also in demand appearing for the first time in the top ten hit list with 40 stolen in this quarter.

Fortunately, and to balance this up, there has been a large reduction in the theft of telehandlers. Last quarter recorded 77 machines stolen from across the UK and this quarter April – June 2012, that figure dropped to 47 stolen, a 38% reduction.

APR-JUN 2012		
RANK	PLANT TYPE	TOT
1	MINI EXCAVATORS	125
2	ATTACHMENTS	75
3	GENERATORS	69
4	TRACTORS	54
5	TELEHANDLERS	47
6	DUMPERS	44
7	RIDE ON MOWERS	42
8	WACKER PLATES	40
9	ROLLERS	37
10	COMPRESSOR	37
	OTHERS	134
	TOTAL	704



- MINI EXCAVATORS
- TELEHANDLERS
- ROLLERS
- ATTACHMENTS
- DUMPERS
- COMPRESSOR
- GENERATORS
- RIDE ON MOWERS
- OTHERS
- TRACTORS
- WACKER PLATES



Farm Thefts

As highlighted earlier, there does appear to be a noticeable reduction in thefts from the farmyard and associated estates.

This overall reduction in reported crime may be as a result of a number of factors including significant press reports encouraging better awareness, continuing police operations, increased security on farms and better equipment protection from the manufacturers. Cynically it could also be down to thieves earning easier money elsewhere.

As seen so often, the thief will always be lead down the path of least resistance. As police start directing operations or security is increased the criminal will decide to move on to easier targets, ie metal theft, catalytic converter theft etc etc.

However, the thief will always continue to target premises and operate in markets where there is a significant demand for the product.

Disproportionately quad bikes continue to dominate as the number one item stolen from the plant world. This quarter was no exception with 222 quads stolen across the UK, a 26.8% increase on the last quarter. Whilst this is worrying the increase in thefts is also seasonal and when compared to the same quarter in 2011 has actually decreased by 9% when 243 quads were stolen...

Currently the PANIU plant database has 2493 stolen records relating to Quad bikes and records only started in 2010 for this category. Currently a quarter of all PANIU daily records relate to the theft of a Quad bike.

Clearly Quads will remain the number one article stolen, due to demand, ease of transport and poor security. Unfortunately the difficulties in identification remain and until manufacturers start considering the use of CESAR, immobiliser and tracking technologies then a significant reduction in theft cannot be achieved.

APR-JUN 2012	
QUAD MAKE	TOT
HONDA	93
YAMAHA	33
SUZUKI	15
OTHERS	81
TOTAL	222



Tractor Thefts

With regards to the theft of tractors this quarter 54 machines were reported stolen from across the UK. This is still a sizeable number and highlights that organized crime is still operating in this sector.

Given the average value of a tractor is approximately £35,000 the loss of these tractors in the last three months is almost £2 million on its own without considering loss of use, replacement costings etc etc..

Although the thefts appear at first sporadic across the country two particular hot spots are emerging, the first in West Yorkshire and the second in Kent. Both areas suffered considerably more thefts than surrounding police areas.

The overall losses are considerably better than for the same period April – June 2011 when 102 tractors were stolen. So although an overall reduction of 47% relates to the theft of tractors between 2011 and 2012 there is still a considerable number of high value machines being stolen and thieves are still stealing a significant number of tractors!!

Lock your gates and remove the vehicle keys overnight if you want your tractor to be there in the morning!!



Force Areas

PANIU include Force area theft data to highlight regions that organized criminal networks are currently operating. This gives Chief Constables the ability to target these networks when they are operating within their force boundaries.

Plant crime is nowhere near as frequent as other crime types and therefore it is easy to miss in comparison to vehicle theft, burglaries, criminal damage, robberies etc.

However, although low volume and low risk it is incredibly high profit for the criminal networks. By highlighting hotspots it allows police forces to target those responsible.

The current number one hotspot is the Metropolitan Police area for London. Because of the sheer size of the City and the huge number of machines operating within it is expected that this area will always attract a greater number of crimes.

When compared to the same period last year the Met area has achieved a continuous reduction of 21%, with 60 crimes being reported this quarter compared to 79 for the 2011 quarter. PANIU have conducted a number of operations against criminals in the London region which has led to this decline.

A force area of concern this quarter and continuing an upturn of over 50% reported crimes over the last year is that of the West Yorkshire police area. This is especially noticeable when compared to the general downturn of reported plant crime across the UK. In July-September 2011 West Yorkshire reported 28 crimes and were 9th in the UK top ten. By October – December 2011 this had risen to 33 crimes in that quarter and earned them 5th place. In January- March 2012 39 crimes were reported which took them to 3rd place. This quarter April – June 2012 the number of crimes reported rose to 58 crimes and 2nd place and only 2 thefts behind London.. If this rate continues into the next quarter West Yorkshire will have the highest theft incidence rate in the UK for plant and machinery crime.

West Yorkshire Police area currently have the highest incidence of both tractor theft and mini excavator theft in the UK.

The second most common incidence of tractor theft relates to the Kent police area.

The highest incidence of telehandler theft is currently the Police Service of Northern Ireland area..

Forces that have achieved the greatest reduction in plant theft in their areas are Lancashire, Surrey Police, Sussex Police, Greater Manchester Police, Herts and Thames Valley Police. All of these forces have continued to have pro active operations specifically targeting plant theft.

APR-JUN 2012		
RANK	POLICE FORCE	TOT
1	MET POLICE	60
2	WEST YORKSHIRE	58
3	KENT	43
4	GREATER MANCHESTER	42
5	ESSEX	31
6	WEST MIDLANDS	30
7	THAMES VALLEY	26
8	AVON & SOMERSET	26
9	WEST MERCIA	24
10	CAMBRIDGESHIRE	23
	OTHERS	341
	TOTAL	704

APR-JUN 2012		
RANK	REGIONAL CLUSTER	TOT
1	SOUTH EAST	219
2	YORKSHIRE & NE	114
3	SOUTH WEST	78
4	EAST MIDS & ANGLIA	73
5	MIDLANDS	64
6	NORTH WEST	59
7	SCOTLAND & NI	55
8	WALES	17
9	BTP & MOD	14
	TOTAL	704
	UNKNOWN/ OTHER	11



Theft by Make

This quarter has seen the continued decline of thefts related to JCB products. Although the largest manufacturer by volume and type having over 300 types of machine in the marketplace it is to be expected that JCB would suffer the lions share of thefts. However, with the determination to protect their customers from theft JCB introduced standard security including CESAR, immobilisers and tracking devices as standard on many machines over the last few years which has seen their theft rate fall consistently.

For comparison in the same period April – June 2009 188 JCB machines were stolen, in April – June 2010 184 JCB machines were stolen and in April – June 2011 153 machines were stolen.

This quarter has shown just 89 JCB machines stolen a huge 52% reduction in theft in just over 3 years and it is hoped that this will continue as more and more machines are brought on line with security fitted.

John Deere has also seen a 37% reduction in theft this quarter when compared to the same period in 2011. Again John Deere are starting to implement CESAR and immobilisation across its range.

Kubota have shown a 17% reduction over this quarter compared to the same in 2011.

On a negative side Thwaites have remained constant with the same level of theft over the last quarters and Bomag have seen a 20% increase in theft highlighting the demand for smaller machinery by criminals and the ease with which they are removed and stolen.

APR-JUN 2012		
RANK	MANUFACTURER	TOT
1	JCB	89
2	KUBOTA	43
3	JOHN DEERE	33
4	BOMAG	29
5	TAKEUCHI	26
6	ATLAS COPCO	24
7	VOLVO	22
8	BENFORD/ TEREX	22
9	CATERPILLAR	22
10	THWAITES	17
	OTHERS	377
	TOTAL	704

Current CESAR Trends

With CESAR markings now protecting almost 100,000th machines since its introduction in 2007 the majority of manufacturers are starting to protect their customers and are fitting as standard.

The primary purpose of the scheme is to allow police a 24 hour ability to check the provenance of any marked equipment. A registration scheme which allows the officer to contact the owner of any plant machine and identify stolen equipment easily.

Prior to the CESAR, the recovery of plant machinery was less than 5%. Today that figure is almost six times greater.

Since 2007 607 machines fitted with CESAR have been reported stolen. This relates to 2.8% of the 21,350 machines that are currently reported on the PANIU database.

This figure initially appears high but one must remember that CESAR is now fitted on newer and more potentially attractive and valuable machines. Therefore by their very nature these machines are targeted by thieves. Comparisons have been made by the insurance industry against marked and non marked machinery and it is proven that machines fitted with CESAR have a significant lower theft rate therefore proving its deterrent factor.

Of those 607 stolen machines 169 have been recovered by police which highlights a 27.8% recovery rate. This is compared to the 5% recovery of machines stolen not fitted with CESAR markings.

Out of approximately 100,000 machines now protected and registered with CESAR, just over 600 have been stolen, (a percentage of only 0.5% approximate).



Contact CESAR Datatag on 0845 070 0440 or PANIU 0207 230 7290

Full details of the scheme can be accessed using the link www.cesarscheme.org





Recent PANIU Recoveries



A new CESAR registered Hewden JCB Telehandler is recovered from Slough by PANIU.



In line with the recent trend of smaller plant being stolen PANIU together with Thames Valley Police uncovered this haul from a lock up garage in Banbury.

Unusual thefts

Highlighted this quarter is a highly unique Bateman RB25 crop sprayer which was stolen on the 17-18th August 2012 from Ickleton, Cambridgeshire.



It is a 2001 model and valued at approximately £35k. Due to its immense size and nature it is likely to have been have to be transported on a LGV lorry.

The index number is WA51LLU and the VIN was 2001092.

Any information or sightings please contact PANIU on 0207 230 7290.

Stolen from Dungannon, Northern Ireland, between 2000hrs 21st July 2012 and 0830hrs 22nd July 2012. McCloskey J50 Crusher, predominately green in colour. Serial number - 71853.



Any information or sightings please contact PANIU on 0207 230 7290 or PSNI Tel: 0845 600 8000 OIC – PC Laverty.

A generator was towed away from a Network rail site in Grays, Essex, with the use of a Mitsubishi Shogun, predominately silver in colour, about 23:07hrs on Monday 11 June 2012.



Harrington 100 KVA 50Hz Mobile 4 wheeled 650 Volt generator coloured grey with turntable on the front. Valued approx £40,000. Serial number - 018713. Vehicle also has unique Network Rail markings CB02ABC TR006.

Any information or sightings please contact PANIU or BTP Tel: 0207 380 1400. Quoting Ref. – B07 044373 2012

OIC – PC David BISHOP david.bishop@btp.pnn.police.uk Tel 01206 232043

Oops.... Got that Monday morning feeling??





JCB TAKES THE LEAD ON CESAR MARKING FOR BREAKERS

JCB today stepped up the battle against construction equipment theft by announcing that seven models in its Hammermaster hydraulic breaker ranges are to get CESAR marking as standard. The move means JCB, which was the first major manufacturer to make CESAR standard on its construction range in 2007, is the only company to offer the anti-theft marking system on its breakers in the UK.


Paul Hartshorn, Director and General Manager of JCB Attachments, said: "This move is in direct response to our customers, who have asked us to come up with an effective anti-theft deterrent for their breakers. Theft of attachments is an ever-growing and often uninsurable problem for our customers that is having a big impact. By registering the breakers with CESAR we are aligning our hammers with the JCB carrier machines which are already protected by CESAR and Datatag technology."



DATATAG RECRUIT VINCE WISE, EX-AVCIS (ACPO Vehicle Crime Intelligence Service)

Datatag, the power behind the official CESAR equipment security and registration scheme and the leading supplier of 'motorcycle' security systems, has announced a strengthening of its team with the appointment of Vince Wise.

Vince, a serving police officer from 1981 until his retirement from the service this year, is well known in vehicle crime circles having worked in the National Criminal Intelligence Service, the Hampshire Vehicle Crime Desk within the Force Intelligence Bureau and AVCIS (ACPO Vehicle Crime Intelligence Service). In the latter role Vince was able to conduct in-depth investigations into equipment and vehicle crime with visits to Poland, Romania, Kenya, Tanzania and South Africa. Vince was instrumental in recovering millions of pounds worth of high-end vehicles, agricultural and construction equipment.



CESAR AND DATATAG FEATURE IN PRESTIGIOUS BIS EXHIBITION

The Construction Equipment Association (CEA) is behind the 'construction equipment industry showcase' at the Department for Business, Innovation & Skills (BIS) headquarters*. The showcase highlights how important the UK construction equipment industry is to Britain's economy and promotes the forthcoming PLANTWORX construction machinery exhibition (May 2013).

The Construction Equipment Industry is one of the UK's most dynamic sectors and contributes £8.5 billion to the UK economy. The UK is the second largest net exporter of construction equipment in the world with over 75% of products manufactured in the UK being exported to 150 countries worldwide.

Participating companies in the showcase include Cat/Perkins, CESAR/Datatag, JCB, Nylacast, Taylor Construction Plant (T.C.P), Terex and Komatsu. The showcase is inside the BIS foyer and on their forecourt. All exhibitors represent the best of British innovation and commercial success.



MP Mark Prisk & CEO of CEA Rob Oliver

PLANTWORX COUNTDOWN EVENT A HUGE SUCCESS

PLANTWORX Countdown event a huge success – over 150 delegates attend and Lord Henley, Minister for Crime Prevention made guest appearance to talk security and Plant Theft.

PLANTWORX, the new biennial construction exhibition (14th – 16th May 2013, Stoneleigh, Warwickshire) hosted a Countdown event last week, alongside the CITS (Combined Industries Theft Solutions) sixth conference, which discussed the issues surrounding the growing problem of equipment, scrap metal and fuel theft.

The Countdown event was well attended with more than 150 industry professionals, who took time out of their very busy schedules to make the pilgrimage to Stoneleigh Park – the home of PLANTWORX.




DATATAG SUPPORT JCB TEAM 'END 2 END' CHALLENGE IN AID OF NSPCC

Datatag, the power behind the official CESAR plant security and registration scheme, supported a 4 man team from JCB Attachments in an epic Lands End to John O'Groats cycle ride in aid of the NSPCC charity.

The team, Andy Hayes, Dave Allen, John Salt and Paul Hartshorn, wore Datatag emblazoned cycling shirts as they battled the wind and rain on their way North. Dave Allen, who managed the recent adoption of CESAR by JCB Attachments, is having an exciting time recently as he carried the Olympic Torch for one leg of its relay around the UK.


Paul Hartshorn, Director and General Manager of JCB Attachments commented before the start: "Our aim is to raise £10,000 for the 'Reaching out to children in Staffordshire' appeal. This will help enable the NSPCC to purchase and refurbish a building in Stoke-on-Trent which will help the charity to provide support for vulnerable young people at risk of cruelty."



DATATAG RECRUIT NICK MAYELL, EX-TER

Datatag, the power behind the official CESAR equipment security and registration scheme and the leading supplier of 'motorcycle' security systems, has announced a strengthening of its team with the appointment of Nick Mayell.

Nick is a well-known name in equipment security and police circles having worked for TER for 18 years. In his new role Nick will work directly with the police, crime prevention organisations and the insurance and asset finance industries to raise the level of awareness and increase the level of detection of vehicle enabled crime. Nick will also plan and present special training courses to disseminate proven vehicle identification techniques for traffic police. An advanced course for specialist vehicle examiners will be available from Datatag in the coming weeks. Further training courses will be available to insurance underwriters and claims officers, asset finance underwriters and fraud investigators. Datatag's unique and specialised training courses are a huge assistance to commerce in helping them identify asset identity and document fraud, which in turn helps reduce insurance premium rises.



INTRODUCING A NEW DIVISION OF DATATAG - TRAINING

with the launch of our first course which has just gained EDI accreditation.

The Plant Theft Awareness and Identification Course

Course content and learning outcomes


- An extensive knowledge base about the nature and extent of plant theft.
- Comprehensive understanding of rational selection, (What to stop!).
- A full understanding of a preliminary roadside check, (What to look for when you have stopped it!).
- How to recognise fake and altered chassis numbers.
- How to recognise fraudulent and tampered chassis plates.
- Understanding paints and primers.
- Effective use of the £10 tool kit.
- Designations and terminology.
- Understanding CESAR and the importance that this ACPO accredited scheme can assist you.
- Other plant databases and the implications of using them.
- Understanding of chemical and thermal restoration.
- Accurately ageing a machine on the roadside.
- Pro-active and re-active security.
- Health and Safety - the dangers surrounding plant

This is the ONLY level 3 accredited course of its type with the internationally recognised examination body EDI (Education Development International), and as such gives credibility to a police officer in an interview or courtroom situation.

The course runs over 2 days and is a mix of theory and practical. Students are required to fill out a workbook, and sit an end of course multiple choice examination.

The cost of the course is £260 ex VAT per delegate. To book onto the course, please contact us via email on info@datatag.co.uk or contact AiTS directly, places are filling quickly, so be quick!

AiTS - Unit A5, Lakeside Business Park, South Cerney, Gloucestershire GL7 5XL
Tel: +44 (0)1285 864650 • Fax: +44 (0)1285 864659 • Email: mail@aitsuk.com





The Official Security and Registration Scheme

STOP POLICE! - URGENT: ID REQUIRED

- Supported by the Home Office and ACPO
- Scheme designed to assist Police in identifying equipment
- 24/7 Secure accredited call centre for Police access
- CESAR mandatory with many Councils & Authorities
- CESAR fitted as standard by leading manufacturers inc: Doosan, JCB, Vibromax, Manitou, Bomag, NC Dumpers, Takeuchi, Bell, Merlo, Landini, McCormick, Hanix, etc.

The Official Registration Scheme



Police Scanning the ID Triangle



DNA

A unique Forensic "DNA" solution and the latest advanced ID technology to be introduced by Datatag. Each piece of plant or machinery will be protected with an invisible unique "DNA" code and criminals will have to be confident they have removed every molecule.

Self Adhesive Tag

This flexible self-adhesive transponder contains a unique code number which is permanently programmed into its integrated circuit and situated under / within one of the triangular ID plates. The number cannot be altered or deleted and is impervious to attack by electric shock & magnetic waves.

CESAR ID Triangle

These tamper-proof plates carry a unique plant identification number ensuring that your equipment can be easily identified and concealed within a machine. The ID plate also contains the CEA and Datatag worldwide registered name & trademarks. The ID plate is attached to both sides of the machine.

Datatag® Datadot®

A superior microdot identification system developed for ease of use. The Datadots® can be applied to any surface, thus making it virtually impossible for the criminals to locate and remove them all.

Glass Tag

This transponder is about the size of a grain of rice and is permanently concealed within each piece of equipment. It contains a unique code number which is permanently programmed into its integrated circuit which cannot be altered or deleted.

Unbelievably - £1 million of UK equipment is stolen every week and only 5% ever recovered*



PROTECT YOUR EQUIPMENT NOW!
Call 08 450 700 440 | www.cesarscheme.org



STOP PLANT THEFT

If you have any information on the theft of machinery or require advice, then contact: Plant & Agricultural National Intelligence Unit



PANIU Officers Checking Equipment



Scanning of Registered Machinery

Did you know...

- The Plant and Agricultural National Intelligence Unit is a specialist Police Unit whose remit is to assist Police and other law enforcement agencies with the identification of stolen plant or agricultural machinery.
- We offer support and advice to help you identify any type of plant or agricultural machine.
- We maintain the most accurate police database of all stolen machines throughout the UK.
- We record all national theft data and have access to the PNC and the majority of plant insurers and manufacturers loss data.
- We offer advice, intelligence and statistical information regarding organised criminal networks working in your area.
- We can provide suitable 'sting' vehicles including tractors and excavators at nil cost.
- We provide specialist police examiners for pre planned operations.
- We provide training and advice to officers around identification and investigative techniques.



The Official Security & Registration Scheme
www.cesarscheme.org

PANIU promote the CESAR registration scheme whereby registered plant equipment can be identified by any person without the need for detailed examinations or specialist equipment. CESAR was created as a direct result of police highlighting the difficulties they faced when dealing with equipment theft.



You can contact PANIU during office hours by ringing 0207 230 7290

Out of these hours the PANIU stolen equipment database can be accessed by Police by ringing CESAR on 08 450 700 440 24 hours a day!

PANIU is staffed by Police Officers there to help You!



Plant Theft - The Real Truth

**PANIU is a specialist police unit dedicated to reducing plant theft
in association with:**

Supported by
Home Office



Association of
Chief Police Officers



ThatchamTM
Quality Assured

Whole of Vehicle Marking



Construction Plant
hirers Association



Construction Equipment Association



Agricultural Engineers Association



Plant Theft Action Group



**It would not have been possible without the assistance
and funding help specifically from:**



ZURICH[®]

Allianz 



HSB Engineering Insurance Limited



AVIVA



RSA



NFU Mutual



datatag



clancydocwra

nmu



QBE

All images, information, statistics and data is the property and the copyright of the Plant & Agricultural National Intelligence Unit (PANIU) and must not be reprinted, reproduced or used without the written permission of PANIU.