



Plant & Agricultural National Intelligence Unit

12th Quarterly Report (July - September 2011)



In association with:





Plant & Agricultural National Intelligence Unit

Welcome to the Twelfth quarterly report from the Plant and Agricultural National Intelligence Unit (PANIU).

This is also an edition celebrating the third year of PANIU operations since it was established in October 2008. As such we include an overview of reported plant crime during the last 36 months.

The purpose of the report is to highlight the current issues relating to plant theft, the emerging criminal trends, and the work of Police Partnerships throughout the UK in combatting machinery and equipment theft. Together with the farming and construction industries plant theft can be beaten!!

This report documents the latest crime data available relating to thefts of plant and agricultural machinery throughout the UK and as such uses data obtained during the period 1st July 2011 to September 31st 2011 and the national trends reported to the Plant and Agricultural National Intelligence Unit (PANIU) during the same period.

PANIU is a specialist police unit that is totally funded by the major Construction and Agricultural Insurance industries and from funding directly from sales of the Construction and Agricultural Equipment Security and Registration Scheme (CESAR).

The primary aim of the unit is to reduce plant and agricultural theft across the United Kingdom. It does this in two ways, firstly by assisting the Roads Policing Officer and Patrol officer on the street enabling them to identify stolen equipment and tackle the organised criminal networks responsible for targeting thefts of such plant equipment.

Secondly, by providing the industry with direct access to a team of specialist Police officers who are committed to reducing plant theft and who understand the complexities of the respective industries. PANIU assist Police throughout the Country by providing advice and intelligence relating to theft of plant machinery. They maintain the most accurate theft database known and receive daily data not only from the PNC but also from the majority of the major insurers in the current market. All data is carefully checked for accuracy and cleansed. The PANIU database is the only one in the world that is considered so accurate that it is circulated by both SOCA and Interpol and is approved by the Home Office, ACPO and the National Police Improvement Agency (NPIA).

PANIU data is held for detection and prevention of crime purposes only and does not operate on a commercial reward basis.

The current PANIU stolen equipment database commenced in October 2008 and now comprises over 18,000 items of equipment. This data is circulated to 187 countries worldwide using the Interpol ASF network.

In a joint partnership with the Insurance companies and the official Home Office backed Construction and Agricultural Equipment Security and Registration Scheme, (www.cesarscheme.org) all PANIU data can be accessed out of normal office hours on 08450 700440.

This allows a police officer to check any suspicious equipment 24 hours a day through the official data partner.



2011

First ACPO Rural Crime Conference a huge success!

On the 10th November 2011 the inaugural ACPO Rural Crime Conference was held in Kettering. The Justice and Policing Minister the Right Hnr. Nick Herbert pledged his support in tackling the criminals responsible for rural crime. To a packed audience he stated ' we will fight crime successfully if we do it through partnership, it shouldn't be controversial to say that the police can't fight crime alone and that's no more so than in rural areas.

Matthew Scott, chief claims manager at NFU Mutual, stated that theft from UK farms alone rose to £49.7 million in 2010 – a year-on-year increase of 17%, according to NFU figures.

The company was committed to helping reduce the scale and impact of crime on the wider rural community, said Mr Scott.

Chief Constable of Lincolnshire and the current ACPO lead for Rural Crime, Richard Crompton used the event as a means to demonstrate best practice policing methods in tackling those criminal networks responsible for rural crime. He said ' By Police forces working together across borders and boundaries with the farming communities, can have a substantial impact in tackling rural crime and tractor thefts'.

The conference was filmed and can be downloaded and viewed via www.acporuralcrime.org.



Nick Herbert Policing Minister



Chief Constable Richard Crompton





MSIG

nmu

HSB Engineering Insurance Limited

Allianz

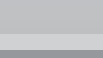
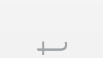
QBE

AVIVA



RSA

Supported by Home Office



PANIU International Police Operations Target Plant Theft!

Since the commencement of operations in October 2008 PANIU has been forging international links with police forces to aid criminal investigations around the globe. To date over 100 stolen UK machines have been identified and recovered in international operations targeted against the criminal networks.

Cooperation between police has increased especially in Eastern Europe. The relationship PANIU now has with the Polish authorities has led to 56 stolen UK machines recovered from Poland alone.

Other countries where British plant machinery is in demand include Eire, Northern Cyprus, Holland, Germany Spain and Romania.

In another twist, Polish police requested assistance from the UK PANIU in relation to a suspicious JCB 4CX that they were conducting enquiries upon. This machine was quickly identified by PANIU as not coming from the UK but actually being stolen from Estonia in March 2010!



JCB 4CX identified by PANIU as stolen from Estonia found in Poland.

PANIU Seize £28,000 Assets From Plant Criminal!

Westminster Magistrates Court, Thursday 20th October 2011.

“But I wasn’t convicted” he shouted at the magistrates

Last November Joseph Aguele was arrested as part of investigation by the Plant & Agricultural National Intelligence Unit (PANIU) into the theft and exportation of high value plant and machinery. Following his arrest, his home address was searched where three safes were recovered from his bedroom. One of these safes was opened and contained £28,000. As the criminal investigation into the thefts continued the financial investigator, DC Pete Smith, conducted his investigation into the seized cash. It was five months after the cash had been seized that he eventually provided any evidence to show where the seized cash had come from. This was despite his claims that the money was legitimate. Aguele had never legitimately worked or paid taxes on any of his business enterprises. The criminal investigation being conducted by DC Smith was concluded and Aguele was not criminally charged. Despite this there remained a strong case for the forfeiture of the seized cash under civil law on the balance of probabilities as police believed the cash was the proceeds of crime. Following a hearing at Westminster Magistrates Court Aguele’s evidence was deemed “not credible” and all of the money was forfeited.

F.I DC Pete Smith said ‘very often the evidence for a criminal conviction falls short of that needed for a conviction. However the option to pursue the civil action under the Proceeds of Crime Act which was introduced nearly ten years ago acts as a deterrent to those engaged in criminal activity’.

A/D.I Richard Bull said ‘this is a great example of cases where there may be insufficient evidence to convict someone on criminal matters, but the criminals ‘ill gotten gains’ can and will still be targeted and pursued by way of a financial investigation’.

Polish Police Identify Dutch Stolen JCB via CESAR!

In July 2011 PANIU were contacted by Polish Police who were investigating a team of suspected plant thieves in Poland. An astute local officer noticed a JCB 535 telehandler which had had its UK CESAR markings removed. Thinking this was suspicious he contacted PANIU to help identify it. The machine had been very well rung and was actually bearing a false VIN plate.

Further enquiries by PANIU revealed this machine had been originally sold to a UK utility company. PANIU contacted the company to determine if it had actually been stolen from them, however they stated they had sold it some months before to a Dutch Construction company. Thinking the trail had gone cold PANIU attempted to contact this Dutch company.

On hearing from the UK Police the Dutch owner was excited and incredibly grateful as he had only just taken delivery of the machine when it was actually stolen from him in late June in Holland!

Even better he had two machines stolen at the same time... The Polish officer then made further enquiries in his local area and actually found the second machine as well!

So there we have it... A Polish policeman noticing a machine because of removed UK CESAR markings and identifying a criminal network had actually stolen the machines from Holland!

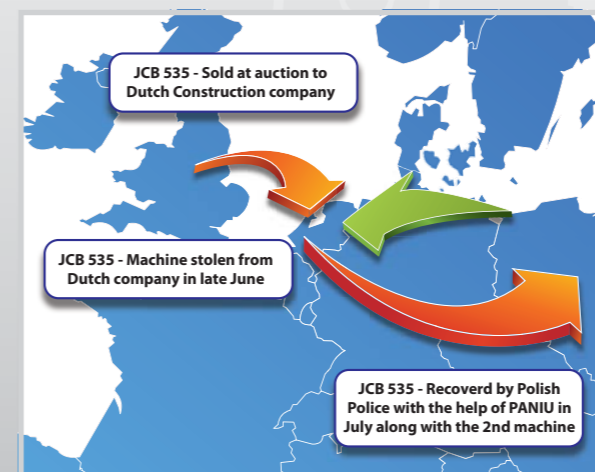
For those of you who criticise CESAR for just being a sticker - think again!!!!



False JCB VIN plate



UK CESAR marking removed led to original suspicion by Polish police officer.



JCB telehandler stolen from Holland identified by CESAR in Poland

Plant & Agricultural National Intelligence Unit



MSIG

nmu

HSB Engineering Insurance Limited

Allianz

QBE

AVIVA



ZURICH

RSA

Supported by Home Office



Plant & Agricultural National Intelligence Unit

Police / PANIU Joint Operation Results In International Traffickers Being Jailed!

Congratulations for an outstanding piece of detective work to DC Lee Pocock, DC Alan Penfold from the SE Regional Asset Recovery Team and especially to PC Andy Boffee from Sussex Roads Policing who together with PANIU targeted a serious organised criminal network exporting huge UK machines stolen from Sussex, Kent, Buckinghamshire and Hampshire.

The investigation uncovered an organised crime group who had been stealing valuable construction site equipment to order throughout the south east, and smuggling it out to northern Cyprus and the Middle East.

Four men have now been convicted and were sentenced on Friday 25 November at Hove Crown Court, after the investigation by PANIU identified at least 21 pieces of machinery, worth more than £750,000, stolen to order in Kent, Sussex, Surrey, Hampshire and Buckinghamshire.

The conspiracy began to unravel after Kent Police read a PANIU circulation relating to the theft of a Cat D8 bulldozer valued at £100,000 that had been stolen from a construction site in Fort Haven Road, Shoreham-by-Sea in West Sussex. A couple of days later this same machine was recognised as it was being transported on a low loader through the Dartford Tunnel destined for Ipswich docks to be exported to northern Cyprus. The driver was arrested.

Subsequent enquiries led PANIU detectives to a yard in Five Oak Green near Paddock Wood in Kent, operated by local man David Butler. Here they found a Caterpillar 320 machine which had been stolen from a site in Beacon Road, Crowborough, also during the previous weekend. They also found two other large machines including a Cat 966 shovel, stolen from Buckinghamshire and Hampshire, together with a large quantity of correspondence relating to stolen plant machinery and parts of other vehicles.

Detectives subsequently discovered that more than 21 other stolen machines, ranging from tractors to telehandlers, had already been exported to northern Cyprus. They were found there by local Customs officers and seized for return to their owners.

Four sentenced

David William Butler, 38 of Whetstead Road, Five Oak Green, Kent; **Hassan Abed Alshammary**, 41, of Coombe House, Dalmeny Avenue, London, N7; **Barry Rhys Jones**, 26, of Eastmead Road, Enfield, Middlesex; and **Paschal Thomas McKeogh**, 36, of no fixed address, appeared at Hove Crown Court on several dates in September and November.



- **Butler** pleaded guilty to two counts, conspiracy to steal a caterpillar dozer, a caterpillar excavator and a JCB digger, and dishonestly handling a caterpillar loading shovel and a mini excavator. He was sentenced to a total of 29 months.
- **Alshammary** was convicted on two counts, the conspiracy to steal with Butler, and a conspiracy to steal a JCB telehandler, a JCB 3CX digger and a JCB telehandler. He was sentenced to three years imprisonment.
- **Jones** was convicted of one count of stealing a caterpillar 320DL excavator and a JCB digger. He was sentenced to 12 months imprisonment, suspended for two years and 240 hours of community service.
- **McKeogh** pleaded guilty to one count of stealing the caterpillar dozer, and one count of stealing a caterpillar 320DL excavator and a JCB digger. He received 18 months imprisonment.

Detective Constable Lee Pocock of the SEROCU Asset Recovery Team said: 'Heavy plant machinery can be very profitable for thieves, especially if they can move it abroad out of the sight of the construction industry in this country. But this case demonstrates that UK law enforcement working together and with partners overseas can make an impact on this type of crime'



PANIU, Sussex, Met and Kent Police working together to tackle international crime gang.



Cat 966, valued £100,000 Stolen from Marlow destined for the Middle East



PC Andy Boffee with £100,000 Cat D8 returned to its rightful place!

CESAR Recovers Machine Before Owner Knew It Was Stolen!

West Midlands Police, this month, recovered a JCB 2CX Backhoe thanks to its CESAR registration before the owner, a national plant hire company, even knew the machine had been stolen! Sharp eyed PC Paul Ennis spotted the JCB machine parked with broken glass. On inspection, he found that the manufacturers VIN identity plate had been removed. The now familiar triangular CESAR registration plates were however intact. One call to CESAR's secure 24-hour hot line was all it took to establish that the machine belonged to the Nottingham branch of Hewden, a leading national plant hirer. PC Ennis told the Hewden branch that he had recovered their machine before they even knew it was stolen. And within minutes of the call Hewden Nottingham were on their way to Birmingham to recover their stolen machine.

Current Crime Trends

Recently more and more reports are made to PANIU of sophisticated frauds, by criminals using fake or forged identities to hire equipment from hire companies, of persons posing as new customers to obtain genuine insurance certificates which are subsequently used as proof of identification to hire more equipment, of fraudulent finance agreements to obtain plant machinery through purchase agreements, of criminals advertising machinery which doesn't physically exist,

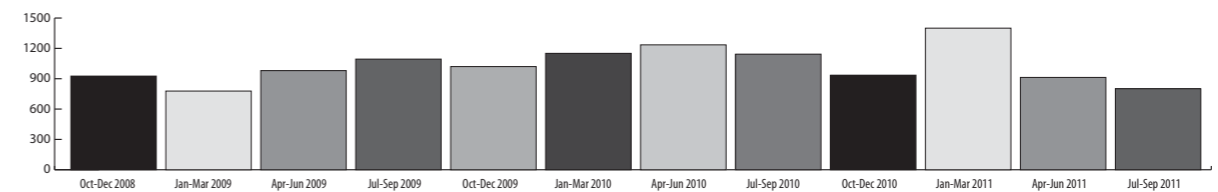
The message to the industry has to be if the new customer has no previous history with your company and is 'unknown' then you really must be cautious in your dealings..It is far better to turn down the customer and lose the small bit of business rather than be greedy, don't do your research and lose a large amount of your hard earned cash as a result!

Remember this is their day job, and they are getting more and more sophisticated.

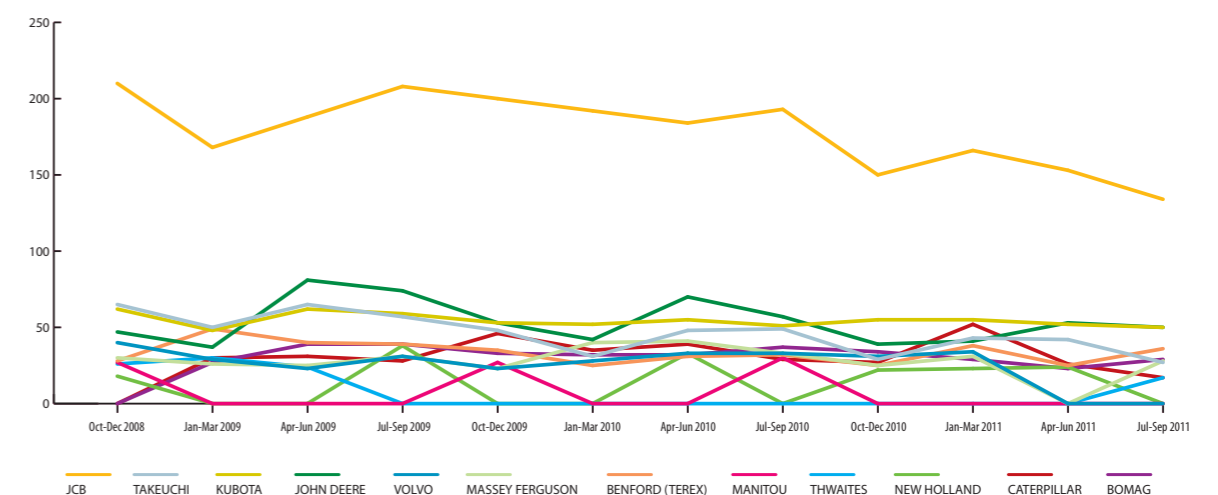
For any company wishing to receive latest PANIU warning bulletins and suspicious person/company alerts please email paniu@met.police.uk and request to be placed on the Alert email register.

Equipment Trends

Quarterly Figures - Total Number of Machines Stolen for the Past 3 Years



Quarterly Figures by Manufacturers for the Past 3 Years





Supported by Home Office



Plant & Agricultural National Intelligence Unit

Theft by Plant Types

As can be seen from the above graphs this quarter has seen a welcome general reduction in plant thefts.

Virtually all types of plant theft are showing a reduction in numbers. This quarter PANIU recorded 801 general thefts. This is down 12% on the previous quarter of 913 units and a massive 30% reduction over the same period last year where PANIU recorded 1143 units stolen.

Significantly the overall number of units reported stolen to police has actually seen a 17% reduction for the period October 2010 to October 2011 against the same period the previous year with 3765 units this year against 4549 units for last.

The reasons for this are not totally clear, but it is believed that since the introduction of CESAR, increased awareness by police and more security placed on plant machinery has driven those criminal networks to easier environments to make money. Examples of these are both metal and high value prestige vehicle thefts which have both seen significant increases in those sectors.

When broken down by type, the theft of mini excavators is showing the greatest reduction with a fall of 40% over the last quarter with 115 units stolen this quarter against 193 the previous quarter. When compared to the same quarter last year this also shows an overall 40% reduction with also 193 units stolen from July-Sept 2010.

Only items showing a reverse trend are both tractors and telehandlers with an increase this quarter over last quarter.

With 114 tractors stolen this period is showing a 10% increase over the last quarter but significantly this is still a 16% reduction over the same period last year.

Telehandlers showed an 8% increase this quarter with 85 units stolen against 78 last quarter. There again there is still a significant decrease of 27% when compared to the same period last year.

Jul- Sept 2011		
RANK	PLANT TYPE	TOT
1	MINI EXCAVATORS	115
2	TRACTORS	114
3	TELEHANDLERS	85
4	GENERATORS	75
5	ATTACHMENTS	55
6	DUMPERS	49
7	RIDE ON MOWERS	38
8	COMPRESSOR	37
9	ROLLERS	36
10	EXCAVATOR	33
	OTHERS	164
	TOTAL	801

Theft by Manufacturers

The manufacturers table remains fairly static with JCB occupying the top slot, which is in the main down to the fact that it has by far the largest exposure in the market place and crosses both the Construction and Agriculture sectors. Demand for JCB, John Deere and Kubota products remain high.

An emerging trend appears to be the demand for Benford Terex products especially small dumpers. These have actually seen an increase from 25 stolen last quarter to 36 this quarter.

This demand for small dumpers is supported by the increase in Thwaites products stolen with 17 thefts this quarter and returns them to the PANIU top ten most stolen league tables again.

Of special notice is a new entry with Ingersoll Rand compressors appearing for the first time in the PANIU most stolen top ten league table this quarter, with 23 stolen over the last couple of months bucking the general downward trend but suggesting a general move to smaller easy to steal and dispose of products being stolen.

Jul- Sept 2011		
RANK	MANUFACTURER	TOT
1	JCB	134
2	JOHN DEERE	50
3	KUBOTA	50
4	BENFORD/ TEREX	36
5	BOMAG	29
6	MASSEY FERGUSON	28
7	TAKEUCHI	27
8	INGERSOLL RAND	23
9	CATERPILLAR	17
10	THWAITES	17
	OTHERS	390
	TOTAL	801

Theft by Police Force

The Force areas remain fairly static with the major cities suffering the most with reference to construction site thefts.

The item to note is the absence of West Midlands Police area thefts during the last quarter with them dropping out of the top ten completely during this period. During the period April – June 2011 WMP were actually listed as number 3 in the top ten with 53 thefts. This can be directly attributed to a recent conference for WMP officers to highlight plant theft and to directly tackle and arrest plant thieves. This indicates the impact that can be had by targeting those responsible for specific crimes with robust policing.

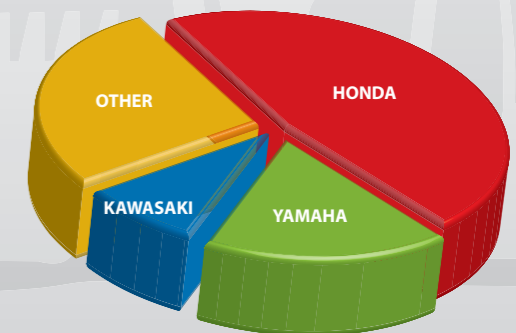
The Metropolitan Police, Kent and Surrey Police areas have shown an increase in the last quarter. This may be due to a new criminal network becoming active in these areas. The Metropolitan area is showing a 15% increase and Kent showing a 13% increase.

Jul- Sept 2011		
RANK	POLICE FORCE	TOT
1	MET POLICE	93
2	GMP	51
3	KENT	45
4	THAMES VALLEY	41
5	ESSEX	36
6	CAMBRIDGESHIRE	32
7	HERTFORDSHIRE	30
8	SURREY	29
9	WEST YORKSHIRE	28
10	WEST MERCIA	27
	OTHERS	389
	TOTAL	801

Agricultural Thefts

Quad bikes remain the largest issue for thefts from farming communities. This quarter has actually seen a slight increase over the last with Honda Utility quads being by far the most targeted.

Ease of theft and poor security continue to cause problems whilst demand remains high with over 1000 stolen in the UK this year alone.





Supported by Home Office



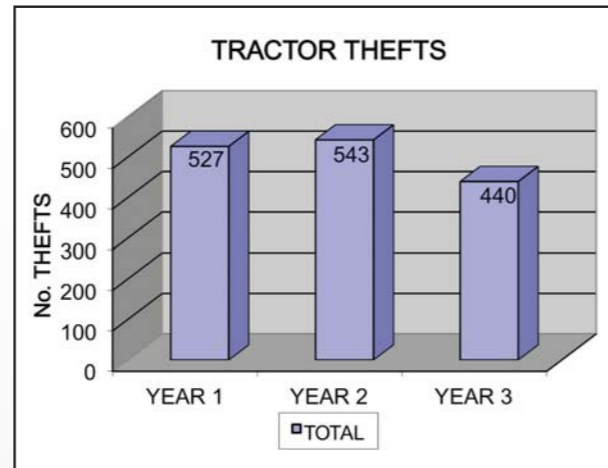
Plant & Agricultural National Intelligence Unit

Tractor Thefts

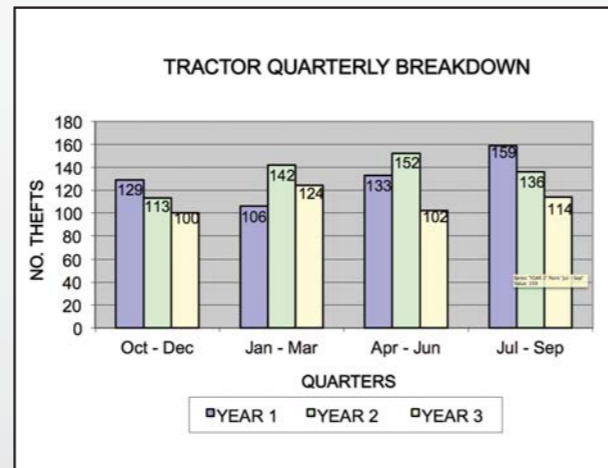
As described on the previous page, the general reduction in plant and machinery theft over the last year has also been reflected in the tractor market as well. There is currently an 18% reduction in volumes from the period Oct 2010 – Oct 2011 when compared to the same period for the year before. However it appears there is a trend to target more valuable and newer machines thus the overall cost to the market remains similar to last year.

Even if a nominal £30,000 is given as the average valuation of a stolen tractor this equates to £13.2 million stolen last year. If this is raised to £40,000 then this figure becomes £17.6 million alone without the costs created that are caused by the loss of that farmers tractor.

John Deere	Year 1	Year 2	Year 3
October - December	47	53	39
January - March	37	42	41
April - June	81	70	53
July - September	74	57	50
TOTAL	239	222	183

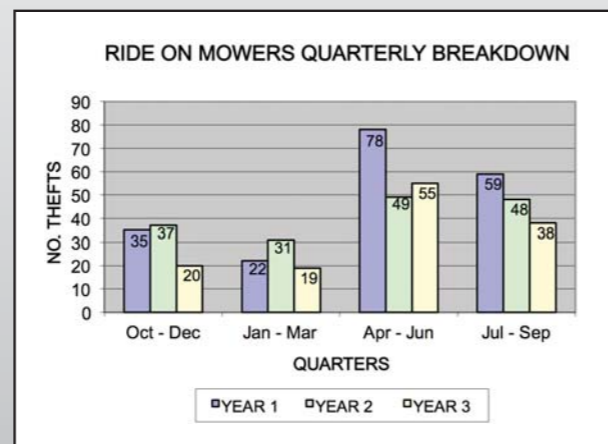
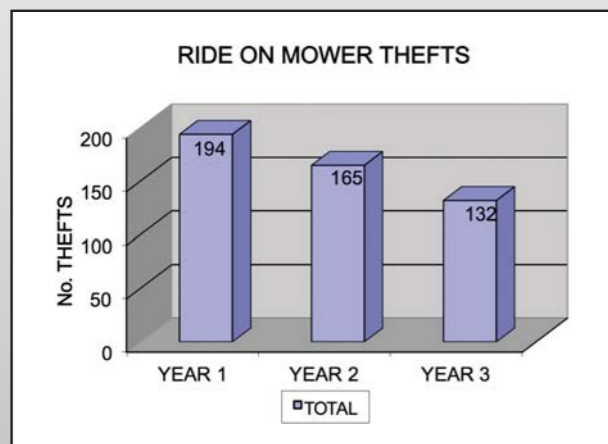


This table demonstrates tractor theft since Oct 2008 to present.



Tractor Theft per quarters since 2008 to present

Ride On Mower Thefts



Current CESAR Trends

The CESAR scheme was launched in January 2007 and to date over 68,000 items have been fitted and remain protected by the scheme. CESAR was originally designed by the Police working in association with the Construction and Agricultural Industries.

The primary purpose of the scheme is to allow police a 24 hour ability to check the provenance of any marked equipment. A registration scheme which allows the officer to contact the owner of any plant machine and identify stolen equipment easily.



Prior to the CESAR, the recovery of plant machinery was less than 5%. Today that figure is almost six times greater.

Since January 2007 467 items of plant machinery marked with CESAR have been stolen. This figure initially appears high but one must remember that CESAR is now fitted on newer and more potentially attractive and valuable machines. Therefore by their very nature these machines are targeted by thieves. Comparisons have been made by the insurance industry against marked and non marked machinery and it is proven that machines fitted with CESAR have a significant lower theft rate therefore proving its deterrent factor.

What is significant is the recovery ratio of these CESAR fitted machines. Of the 467 stolen 132 have been recovered giving an overall recovery rate of over **28.2%**.



In relation to telehandlers alone 215 have been stolen that were fitted with CESAR. Of these 69 have been recovered giving a **32%** recovery rate. This is a significant difference from the 5% prior to the advent of CESAR.

Full details of the scheme can be accessed using the link www.cesarscheme.org



www.datatag.co.uk



Supported by Home Office



Unusual Thefts

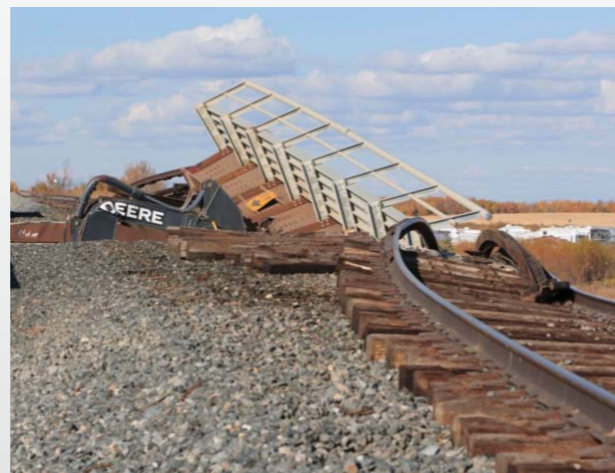
Stolen from Bolsover near Chesterfield and last seen near Doncaster was a specially adapted vehicle for use on the railways valued at £350,000 belonging to SRS HOLDINGS LTD, which was a 25 tonne mobile crane mounted on Volvo truck chassis Reg G921SGP.



- Crane Serial Number 9573041
- Crane manufacturer + type HMF 2120
- Made 1995

Any information relating to the above thefts please contact PANIU on 0207 230 7290.

Oops.... Got that Monday morning feeling??



Men inserting new pedestrian area. Look hard...



Plant & Agricultural National Intelligence Unit

INTELLIGENCE UNIT



MSIG

nmu

HSB Engineering Insurance Limited

Allianz

QBE

AVIVA



RSA

Supported by Home Office



Association of Chief Police Officers



Construction Plant Users Association



AEA



Agricultural Engineers Association



Plant Theft Action Group



Thatcham Quality Assured

Plant & Agricultural National Intelligence Unit

DATATAG PROTECTS 4 X 4's WITH MULTI LAYERED SECURITY TECHNOLOGY

Datatag, the market leading security products provider and the power behind the official UK plant security and registration scheme-CESAR, used the Driffield Show, the UK's largest one day agricultural show, to launch a new security and identification system for all types of 4 x 4 vehicles. Datatag launched the new and innovative security system in conjunction with Humberside Police. Thieves have stolen 19 4x4 vehicles in the last 6 months in the Humberside patch.



CESAR TACKLE CRIME ACROSS EUROPE

The European construction industry suffers the theft of approximately €4.5 billion worth of construction equipment a year with networks of organised criminals behind the majority of crime. Thousands of pieces of stolen equipment, ranging from hand held drills to 30 tonne excavators, are shipped into Eastern Europe and the Baltic states from the UK and other EU states.

Despite co-ordinated police action, thefts continue to rise as organised and professional criminals regard equipment theft as 'low risk' crime. There are however signs that the insurance and finance industries, who have a vested interest in reducing thefts and increasing recovery rates, are convincing equipment manufacturers, rental companies, and end users to take the risk of theft more seriously and to take more precautions with equipment.



To read the full articles go to: <http://www.cesarscheme.org/News.html>

CESAR HITS 60,000 REGISTRATIONS

CESAR, the only official UK equipment security and registration scheme, became the most successful and widely used scheme in the world at the turn of the year after achieving 15,000 registrations in 2010 taking the cumulative figure to 40,000. Now, just 7 months later, CESAR has achieved another 20,000 registrations, bringing the total number of machine registrations, in construction and agriculture, to 60,000!

The 60,000th CESAR registration, a Terex PT3000 dumper, was delivered to GAP Plant's Nottingham branch in August where the machine was immediately put to work on a Severn Trent construction site at Newthorpe, Nottingham.

CESAR is fitted, as standard, on machines built on production lines in the UK, Germany, and the USA. A veritable 'who's who's' of international equipment manufacturers including JCB, Manitou, Merlo, Bomag, Takeuchi, CAT (through UK dealer Finning), and John Deere have adopted CESAR and offer their customers all the benefits of a scheme with proven deterrent and recovery credentials.

CESAR is a powerful deterrent against theft and an invaluable aid in recovery. CESAR can protect everything from a hand held hydraulic breaker to a 50 tonne excavator. Various systems are available to suit the particular piece of equipment. In every case, the Datatag supplied security system works in the same way. Each piece of equipment is given a unique 'fingerprint' that thieves simply cannot remove, no matter how hard they try. A multi-layered approach is taken using an array of advance Datatag security marking technology including Radio-frequency identification (RFID) transponders, forensic liquid DNA, microscopic Datadots, and, UV stealth etching technology. Overt triangular, tamper evident, registration labels are fitted to CESAR machines as a warning to would-be thieves to stay away. Thieves regard CESAR marked equipment as 'too hot to handle', which is why CESAR registered equipment is 4 times less likely to be stolen than un-registered equipment. One minute trace of the forensic DNA is sufficient to positively identify a stolen machine and its rightful owner. Since the launch of the CESAR scheme in 2007 overall stolen machinery recovery rates in the UK have climbed from below 5% to over 8% with over 30% of stolen CESAR machines recovered.



To read the full articles go to: <http://www.cesarscheme.org/News.html>



Supported by Home Office



COMBINED INDUSTRY THEFT SOLUTIONS (CITS) QUANTIFY EQUIPMENT THEFT

The total cost of theft in the UK is up to £3 billion every year according to Combined Industry Theft Solutions (CITS) who have gleaned the figure from insurance industry estimates. This figure includes the cost of replacements, the cost of repairing damage and processing claims.



Equipment theft is a large part of this total cost. Cars, vans, trucks, and motorbikes have always been a target for professional and opportunistic thieves and in the past decade construction and agricultural equipment has been a common target with over 500 machines stolen every month from farms and construction sites up and down the UK. Despite the financial impact of this, the cost of equipment theft has never been accurately quantified. However, not for profit organisation, CITS has now established a figure of £650 million p.a. as an accurate estimate. This staggering figure comes from research commissioned by CITS.

DERBYSHIRE POLICE PROMOTE CESAR

Derbyshire Constabulary, in an innovative initiative, are promoting the CESAR scheme which acts as a powerful deterrent against equipment theft and an invaluable aid in recovery. The initiative, organised by PC Sarah Sims, saw Derbyshire officers and staff from Datatag, the company behind the CESAR scheme, promoting 'good practice' at the busy Bakewell livestock market, Monday January 9th. This exercise will be repeated on the next 3 market days, Monday January 16th, 23rd, and 30th.

Equipment theft from British farms is a huge problem with the NFU Mutual reporting that thefts have increased to £49.7 million a year. Professional and opportunistic thieves prey on farmers who leave equipment unattended or in unsafe circumstances. The police actively encourage farmers to take sensible precautions to safeguard their equipment.



CESAR, the only official equipment security and registration scheme in the UK, was launched into agriculture at Tillage in September 2009, after endorsement from the Agricultural Engineers Association (AEA), the distinctive triangular registration plate is now a familiar sight on British farms. Now, just 27 months later, the number of cumulative machine registrations has topped 70,000 units, of which 32,000 machines are working in British agriculture, making CESAR the most successful scheme of its type anywhere in the world.

To read the full articles go to: <http://www.cesarscheme.org/News.html>

NEW HOLLAND ADOPT CESAR FOR T6 AND T7 RANGES

Full-line equipment manufacturer New Holland has announced that it will be fitting CESAR security systems as standard to machines manufactured in its Basildon, Essex plant from January 2012. Machines to be equipped and registered with CESAR, which acts as a powerful deterrent against theft and an invaluable aid in recovery, include the award-winning T6 and T7 series tractors destined for the UK.

CESAR, the only official equipment security and registration scheme in the UK, became the most successful and widely used scheme, of its type, in the world at the beginning of 2011 after achieving 15,000 registrations in 2010 taking the cumulative figure to 40,000. Now, just 11 months later, the number of cumulative machine registrations has topped 70,000 units, of which 32,000 machines are working in British agriculture. Launched into agriculture at Tillage 2009, after endorsement from the Agricultural Engineers Association (AEA), the distinctive triangular registration plate is now a familiar sight on British farms.

Commenting on the announcement, Chris Harrison Sales Director of Datatag ID Limited, had this to say, "I'm delighted that New Holland has adopted CESAR and that machines rolling off the Basildon production lines for British farmers will be more secure as a result. Sadly, rural crime is still on the increase with around £1m worth of agricultural equipment stolen every week. CESAR is a proven deterrent against theft, but the benefits don't stop there, as many leading insurers offer insurance premium discounts on CESAR registered machines. I'm sure that New Holland customers will appreciate the benefits of this initiative by a world class manufacturer."

New Holland recently confirmed its industry leading status as a full-line equipment manufacturer by winning five Agritechnica silver medals, at the international show, in the three key business segments: tractors, harvesting equipment, and speciality machines.

Agritechnica also saw the preview of the new, Basildon built, New Holland T6 range of tractors, with models from 120hp to 175hp. Fitting CESAR to the T6 range will further enhance the exceptional cost savings achieved with this new range.



To read the full articles go to: <http://www.cesarscheme.org/News.html>



Plant & Agricultural National Intelligence Unit



The Official Security and Registration Scheme

STOP POLICE! - URGENT: ID REQUIRED

- Supported by the Home Office and ACPO
- Scheme designed to assist Police in identifying equipment
- 24/7 Secure accredited call centre for Police access
- CESAR mandatory with many Councils & Authorities
- CESAR fitted as standard by leading manufacturers inc: Doosan, JCB, Vibromax, Manitou, Bomag, NC Dumpers, Takeuchi, Bell, Merlo, Landini, McCormick, Hanix, etc.

The Official Registration Scheme



Police Scanning the ID Triangle



DNA

A unique Forensic "DNA" solution and the latest advanced ID technology to be introduced by Datatag. Each piece of plant or machinery will be protected with an invisible unique "DNA" code and criminals will have to be confident they have removed every molecule.

Self Adhesive Tag

This flexible self-adhesive transponder contains a unique code number which is permanently programmed into its integrated circuit and situated under / within one of the triangular ID plates. The number cannot be altered or deleted and is impervious to attack by electric shock & magnetic waves.

CESAR ID Triangle

These tamper-proof plates carry a unique plant identification number ensuring that your equipment can be easily identified and concealed within a machine. The ID plate also contains the CEA and Datatag worldwide registered name & trademarks. The ID plate is attached to both sides of the machine.

Datatag® Datadot®

A superior microdot identification system developed for ease of use. The Datadots® can be applied to any surface, thus making it virtually impossible for the criminals to locate and remove them all.

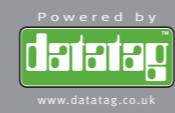
Glass Tag

This transponder is about the size of a grain of rice and is permanently concealed within each piece of equipment. It contains a unique code number which is permanently programmed into its integrated circuit which cannot be altered or deleted.

Unbelievably - £1 million of UK equipment is stolen every week and only 5% ever recovered*

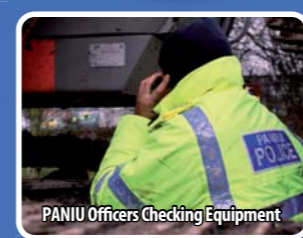


PROTECT YOUR EQUIPMENT NOW!
Call 08 450 700 440 | www.cesarscheme.org



STOP PLANT THEFT

If you have any information on the theft of machinery or require advice, then contact: Plant & Agricultural National Intelligence Unit



PANIU Officers Checking Equipment



Scanning of Registered Machinery

Did you know...

- The Plant and Agricultural National Intelligence Unit is a specialist Police Unit whose remit is to assist Police and other law enforcement agencies with the identification of stolen plant or agricultural machinery.
- We offer support and advice to help you identify any type of plant or agricultural machine.
- We maintain the most accurate police database of all stolen machines throughout the UK.
- We record all national theft data and have access to the PNC and the majority of plant insurers and manufacturers loss data.
- We offer advice, intelligence and statistical information regarding organised criminal networks working in your area.
- We can provide suitable 'sting' vehicles including tractors and excavators at nil cost.
- We provide specialist police examiners for pre planned operations.
- We provide training and advice to officers around identification and investigative techniques.



The Official Security & Registration Scheme

www.cesarscheme.org

PANIU promote the CESAR registration scheme whereby registered plant equipment can be identified by any person without the need for detailed examinations or specialist equipment. CESAR was created as a direct result of police highlighting the difficulties they faced when dealing with equipment theft.



You can contact PANIU during office hours by ringing 0207 230 7290

Out of these hours the PANIU stolen equipment database can be accessed by Police by ringing CESAR on 08 450 700 440 24 hours a day!

PANIU is staffed by Police Officers there to help You!



Plant Theft - The Real Truth

**PANIU is a specialist police unit dedicated to reducing plant theft
in association with:**

Supported by
Home Office



Association of
Chief Police Officers



Thatcham™
Quality Assured
Whole of Vehicle Marking



Construction Plant
hirers Association



Construction Equipment Association



Agricultural Engineers Association



Plant Theft Action Group



Call anonymously with information about crime

**It would not have been possible without the assistance
and funding help specifically from:**



ZURICH®

Allianz 



HSB Engineering Insurance Limited



AVIVA



RSA



NFU Mutual



datatag™



clancydocwra

nmu



MSIG



QBE

All images, information, statistics and data is the property and the copyright of the Plant & Agricultural National Intelligence Unit (PANIU) and must not be reprinted, reproduced or used without the written permission of PANIU.